

A4F

Computerized Lockstitch Sewing Machine With Light Sound

Light sound, Precise stitch, Better to use

- The height of the presser foot after trimming and during sewing is adjustable within the range of 0-13mm
- The stepping motor controls the stitch length, accurate to 0.1mm
- Lock thread front and back, high stitch repetition rate
- Pattern sewing, stylish and beautiful

400-8876-858
www.chinajack.com



Jack Wechat



Jack Facebook

2021.06

JACK SEWING MACHINE CO.,LTD.

No. 15 South Airport Road, Jiaojiang District, Taizhou, Zhejiang, PRC
TEL: 0086-576-88177782 88177767
FAX: 0086-576-88177787

E-mail: sales@chinajack.com
www.chinajack.com

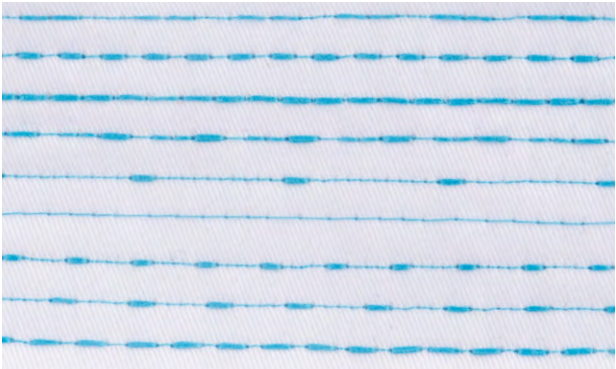


A4F

Item: computerized lock-stitch sewing machine with light sound
Feature: Light sound, precise stitch, better to use

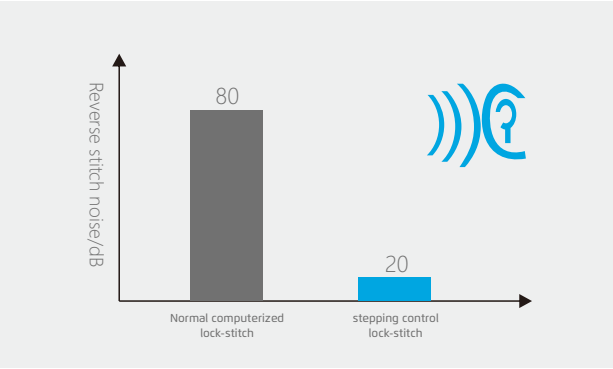


Germany design, unique image, precise details.



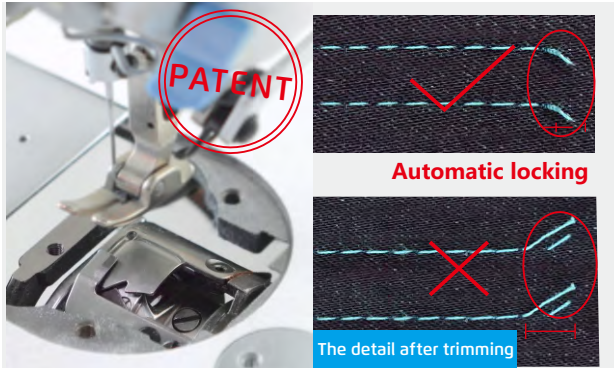
3 Pattern sewing, stylish and beautiful

You can choose different patterns and stitches according to the requirements of clothing craftsmanship, and you can edit the patterns you need to give you stylish and beautiful stitches.



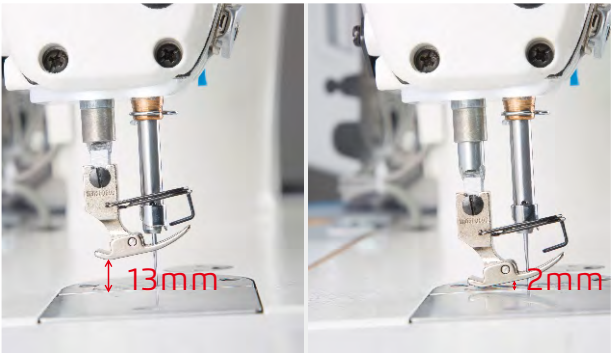
4 Step control, lighter sound

Scientific design, through the stepping motor to control the reverse stitching and presser foot lifting, realize the reverse stitching and presser foot lifting silently, giving you a quiet and comfortable working environment



5 Short thread ends, no need to trim again

There is no need to trim the thread ends after sewing, one less thread trimming action, one less risk of cutting the fabric, saving time, labor and money.



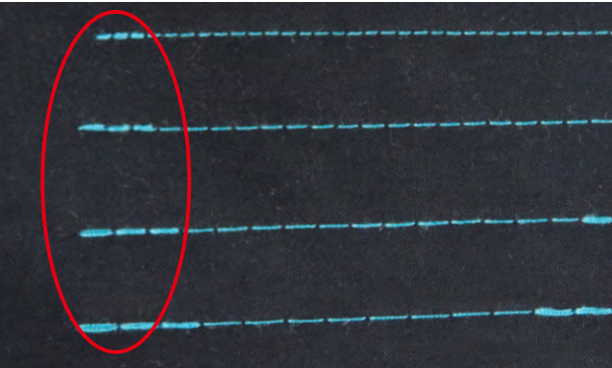
6 Height adjustable, easy to operate

After trimming and midway, the height of the presser foot can be adjusted within the range of 0-13mm, which can meet the requirements of different fabrics, saving labor and convenience.



1 Accurate stitch length

The stitch length is controlled by a stepping motor, accurate to 0.1mm, and the stitch length adjustment function can be locked as needed to avoid random adjustment of the stitch length.



2 Lock thread front and back, high stitch repetition rate

A perfect reverse stitch can be realized at any stitch length, and the front and rear thread lock function can be set.

Technical Parameters

机 型 Model	机针 Needle	线数 Threads	针迹长度 (mm) Stitch length	压脚高度 (mm) Height of presser foot	最高转速 (S.p.m) Max. speed	薄料/中厚料 Thick material/ light to medium material	厚料 Thick material	体积 (mm) Volume	重量 (kg) Weight
A4F-D	DB×1 11-18#	2	5	5-13	5000	√	/	690×295×550	38.6/44.6
A4F-DH-M	DB×1 11-18#	2	5	5-13	5000	√	/	690×295×550	38.6/44.6
A4F-DH	DP×5 18-21#	2	5	5-13	3500	√	√	690×295×550	38.6/44.6