

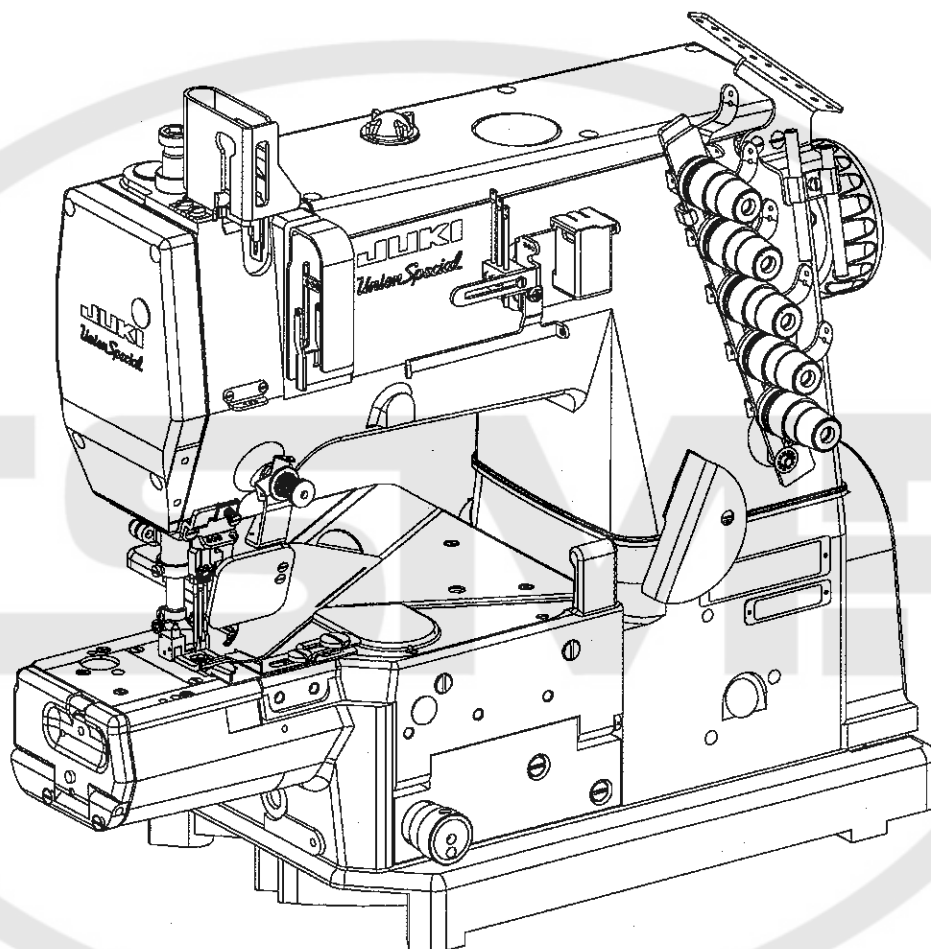


Finest Quality

# *Union Special*

INDUSTRIAL SEWING EQUIPMENT

## ILLUSTRATED PARTS SUPPLEMENT



**CS100 SERIES, DIFFERENTIAL FEED,  
HIGH SPEED CYLINDER BED MACHINES**

**MANUAL NO. PT9609**

**STYLES**

**CS122H21**

**CS132H21**

**Supplement PT9609  
Supplement to  
Manuals PT9425 & OP9637**

Fourth Edition Copyright 1997 by Union Special Corporation  
Rights Reserved In All Countries Printed in U.S.A. August 1997

---

**PREFACE**

This parts supplement has been prepared to assist you in locating NEW individual parts or assemblies on the CS100 Series machines. It can be used in conjunction with Union Special Parts Manual PT9425, Operator's Manual OP9637, and Engineer's Manual EN9424.

It is the desire of Union Special that each machine run at its optimum performance. Parts listed in this manual are designed specifically for your machine and are manufactured with utmost precision to assure long lasting service.

This manual has been comprised on the basis of available information. Changes in design and/or improvements may incorporate a slight modification of configuration in illustrations or part numbers.

---



## SAFETY RULES

1. Before putting the machines described in this manual into service, carefully read the instructions. The starting of each machine is only permitted after taking notice of the instructions and by qualified operators.

**IMPORTANT!** Before putting the machine into service, also read the safety rules and instructions from the motor supplier.

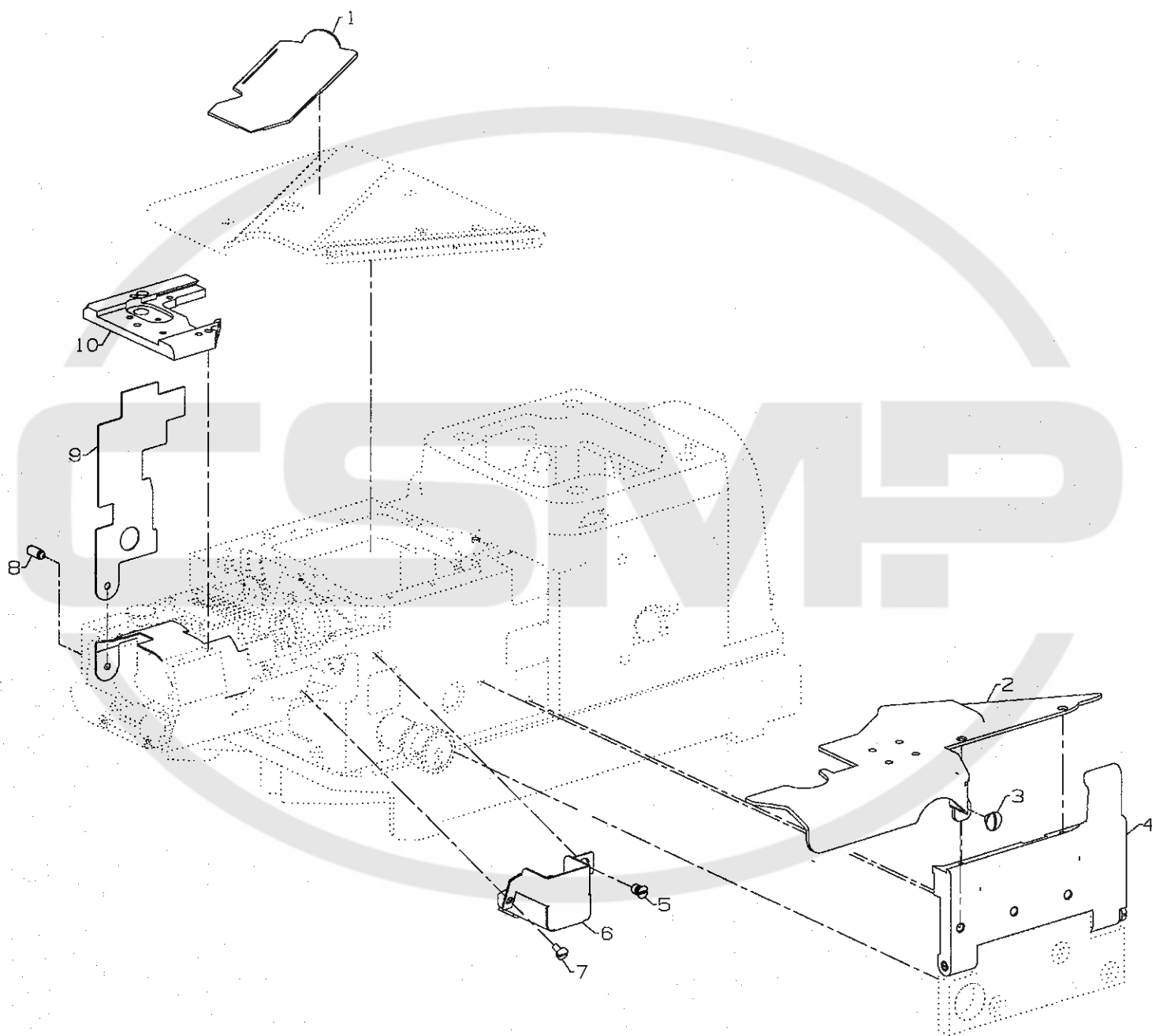
2. Observe the national safety rules valid for your country.
3. The sewing machines described in this instruction manual are prohibited from being put into service until it has been ascertained that the sewing units which these sewing machines will be built into, have conformed with the EC Council Directives (89/392/EEC, Annex II B).

Each machine is only allowed to be used as foreseen. The foreseen use of the particular machine is described in paragraph "STYLES OF MACHINES" of this instruction manual. Another use, going beyond the description, is not as foreseen.

4. All safety devices must be in position when the machine is ready for work or in operation. Operation of the machine without the appertaining safety devices is prohibited.
5. Wear safety glasses.
6. In case of machine conversions and changes all valid safety rules must be considered. Conversions and changes are made at your own risk.
7. The warning hints in the instructions are marked with one of these two symbols:



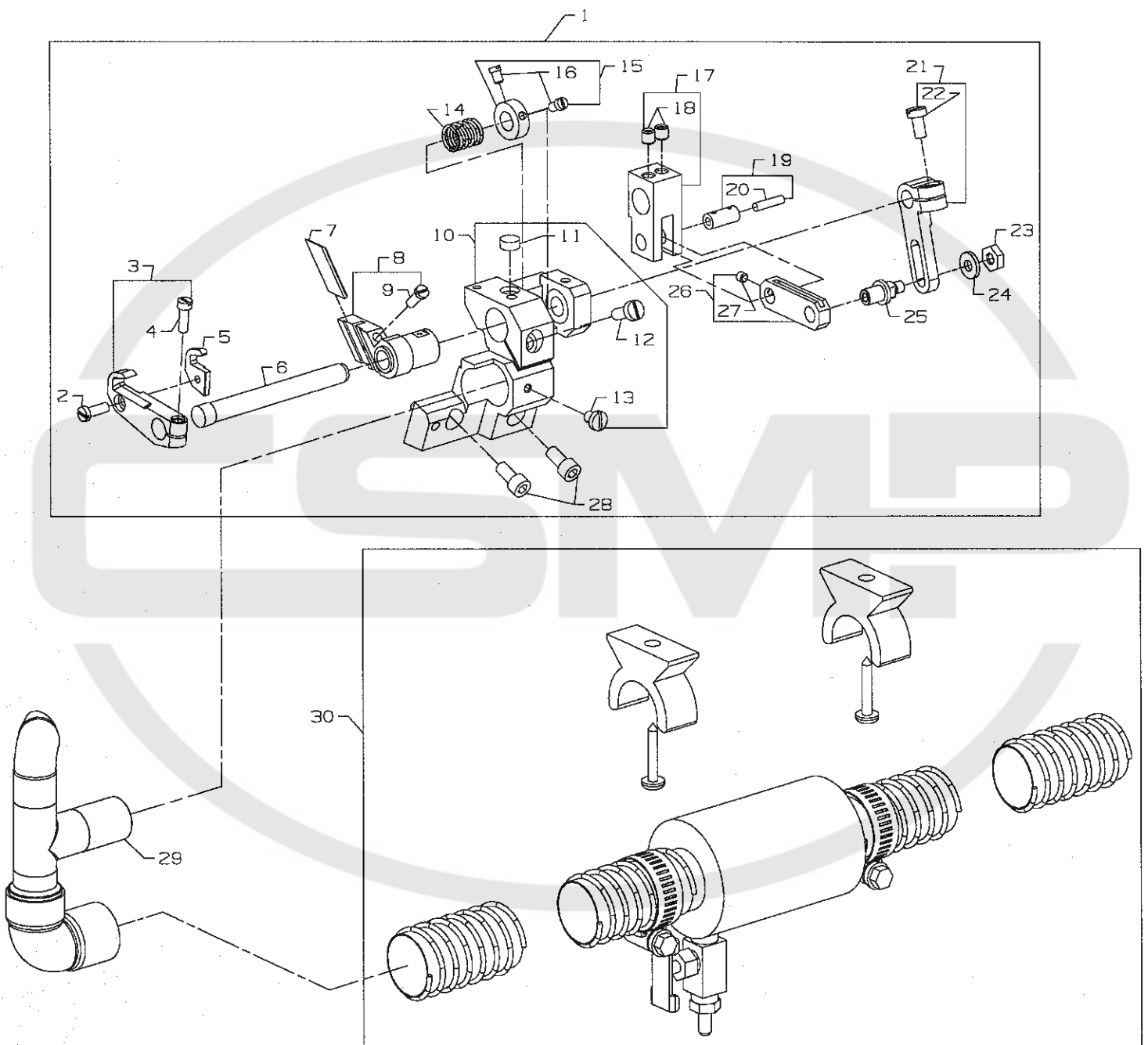
8. When doing the following the machine has to be disconnected from the power supply by turning off the main switch or by pulling out the main plug:
  - 8.1 When threading needle(s), looper, spreader etc.
  - 8.2 When replacing any parts such as needle(s), presser foot, throat plate, looper, spreader, feed dog, needle guard, folder, fabric guide etc.
  - 8.3 When leaving the workplace and when the workplace is unattended.
  - 8.4 When doing maintenance work.
  - 8.5 When using clutch motors without actuation lock, wait until the motor is stopped totally.
9. Maintenance, repair and conversion work (see item 8) must be done only by trained technicians or special skilled personnel under consideration of the instructions.
10. Any work on the electrical equipment must be done by an electrician or under direction and supervision of special skilled personnel.
11. Work on parts and equipment under electrical power is not permitted. Permissible exceptions are described in the applicable sections of standard sheet DIN VDE 0105.
12. Before doing maintenance and repair work on the pneumatic equipment, the machine has to be disconnected from the compressed air supply. In case of existing residual air pressure after disconnecting from compressed air supply (i.e. pneumatic equipment with air tank), the pressure has to be removed by bleeding.



## COVERS

| Ref.<br>No. | Part No. | Description                         | Amt.<br>Req. |
|-------------|----------|-------------------------------------|--------------|
| 1.          | 50302A   | Slide Cover .....                   | 1            |
| 2.          | 50301BX  | Cloth Plate, Front .....            | 1            |
| 3.          | 22730    | Screw .....                         | 1            |
| 4.          | 29476TA  | Swing Out Cloth Plate Support ..... | 1            |
| 5.          | 22807    | Screw .....                         | 1            |
| 6.          | 50382JF  | Guard .....                         | 1            |
| 7.          | 98A      | Screw .....                         | 1            |
| 8.          | 22597    | Screw .....                         | 1            |
| 9.          | 50396F   | Splash Guard .....                  | 1            |
| 10.         | 34380T   | Throat Plate Support .....          | 1            |
| -           | 96527    | Parallel Pin (not shown) .....      | 1            |

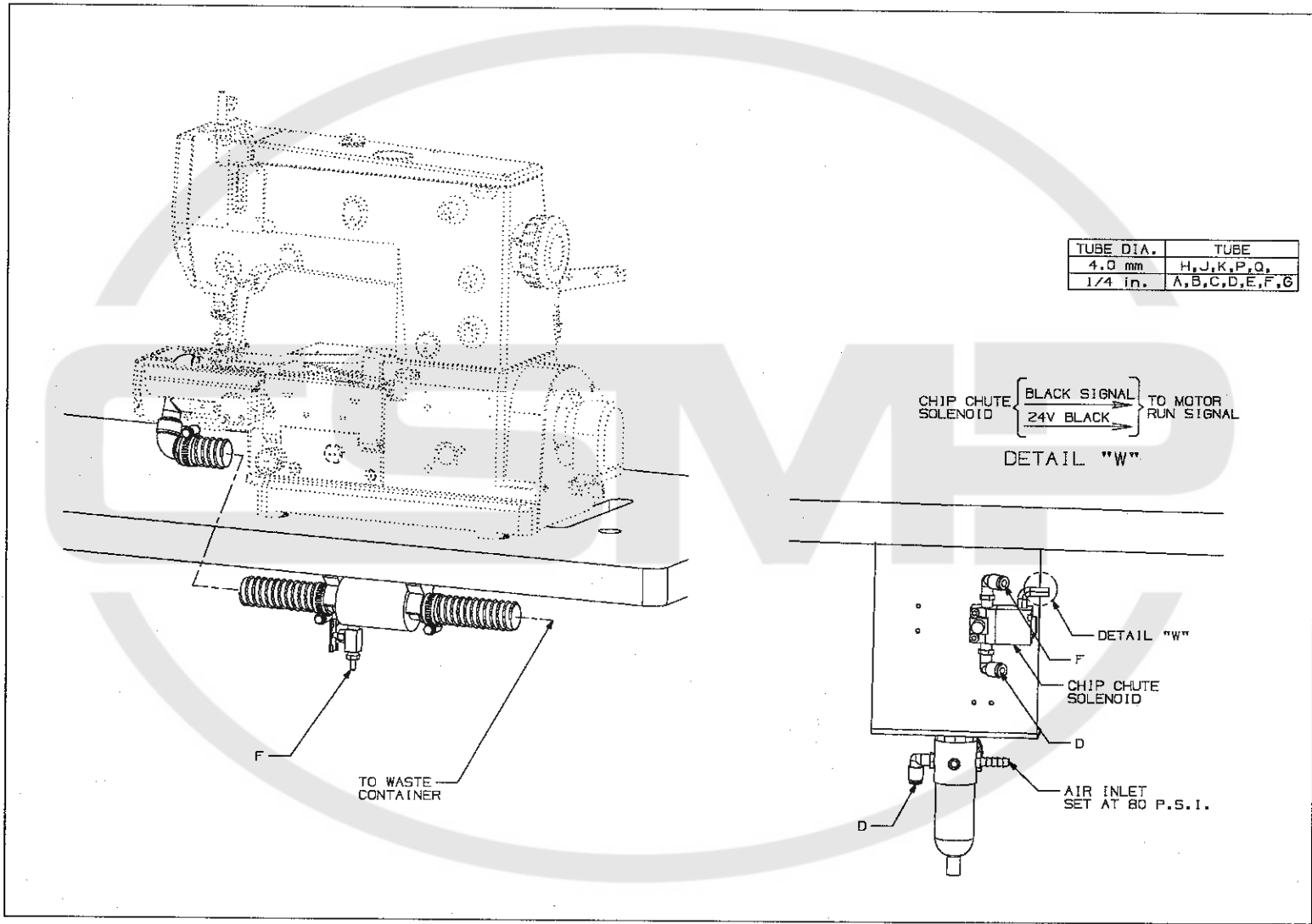




# FABRIC TRIMMER ASSEMBLY

| Ref.<br>No. | Part No. | Description                   | Amt.<br>Req. |
|-------------|----------|-------------------------------|--------------|
| 1.          | 29924L   | Fabric Trimmer Assembly ..... | 1            |
| 2.          | HS24C    | Screw .....                   | 1            |
| 3.          | 34771RL  | Knife Lever .....             | 1            |
| 4.          | 22729    | Screw .....                   | 1            |
| 5.          | 34770EL  | Upper Knife .....             | 1            |
| 6.          | 34785L   | Shaft .....                   | 1            |
| 7.          | 34749EL  | Lower Knife .....             | 1            |
| 8.          | 34750PL  | Lower Knife Holder .....      | 1            |
| 9.          | 22729AB  | Screw .....                   | 1            |
| 10.         | 34739L   | Support Block .....           | 1            |
| 11.         | 34739M   | Stop .....                    | 1            |
| 12.         | 93       | Screw .....                   | 1            |
| 13.         | 25CC     | Screw .....                   | 1            |
| 14.         | 97005D   | Spring .....                  | 1            |
| 15.         | 33688    | Adjusting Collar .....        | 1            |
| 16.         | 22564D   | Screw .....                   | 2            |
| 17.         | 34771SL  | Lever .....                   | 1            |
| 18.         | 22894C   | Screw .....                   | 2            |
| 19.         | 34336P   | Link Pin .....                | 1            |
| 20.         | 666-149  | Oil Wick .....                | 1            |
| 21.         | 34771VL  | Lever .....                   | 1            |
| 22.         | 22528    | Screw .....                   | 1            |
| 23.         | 9937     | Hex Nut .....                 | 1            |
| 24.         | 4611U    | Washer .....                  | 1            |
| 25.         | 34771UL  | Adjusting Bolt .....          | 1            |
| 26.         | 34771TL  | Connecting Link .....         | 1            |
| 27.         | 22894Y   | Set Screw .....               | 1            |
| 28.         | 95412    | Screw .....                   | 2            |
| 29.         | 671B115  | Suction Tube .....            | 1            |
| 30.         | 29480AWK | Exhaust Assembly .....        | 1            |



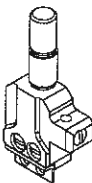
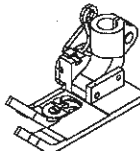
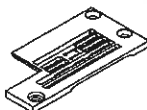

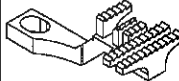




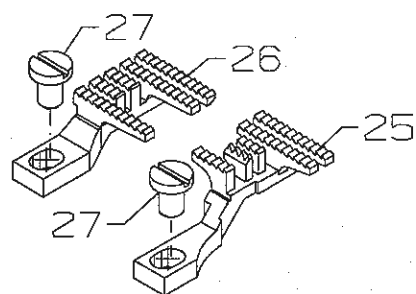
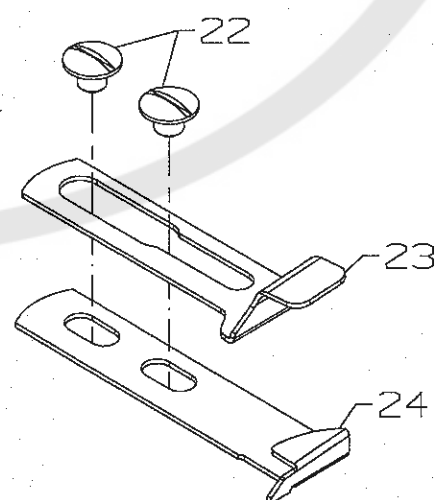
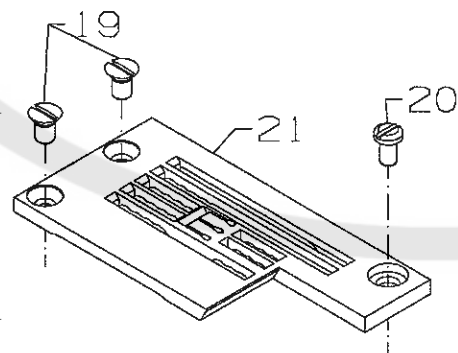
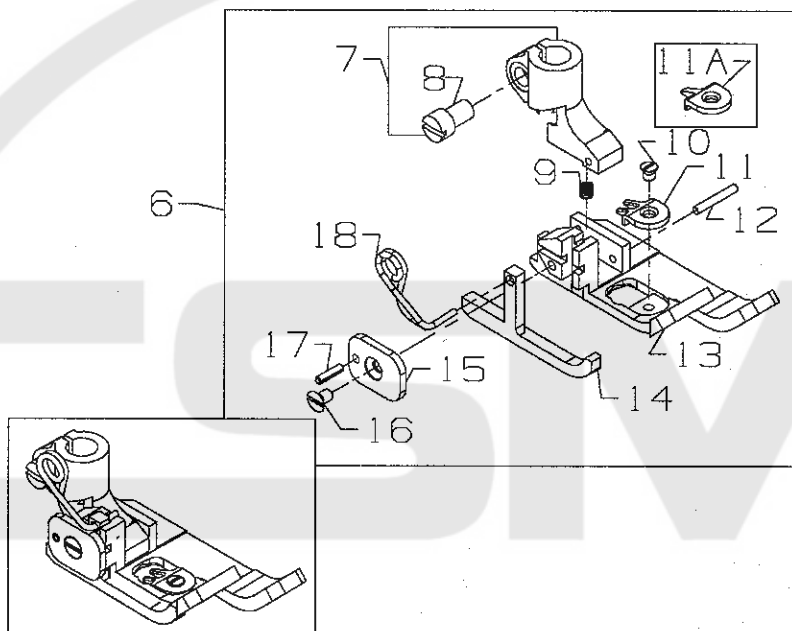
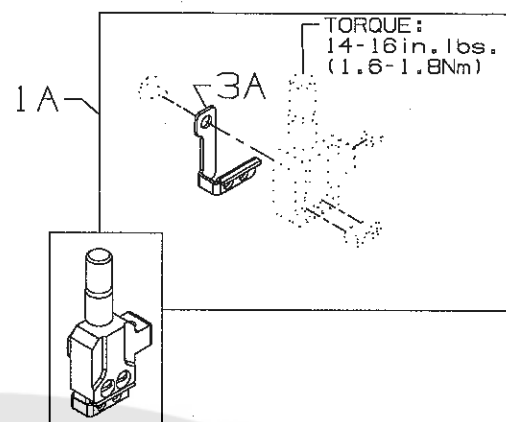
# Union Special

CSH21-SEWING.COM

ALL RIGHTS RESERVED IN ALL COUNTRIES PRINTED IN U.S.A. AUGUST 1996

| SUB CLASS | SEWING COMB. | MODEL         | <br>NEEDLE HEAD | <br>PRESSER FOOT ASSEMBLY | <br>THROAT PLATE | <br>FEED DOG MAIN | <br>FEED DOG DIFFERENTIAL |
|-----------|--------------|---------------|--|--|---|--|--|
| H21       | CH21-2A40    | CS122H21-2A40 | 50318AD40  | 50320BG40  | 34724FR40   | 34705FT  | 34726FT  |
|           | CH21-2C40    | CS122H21-2C40 |  |  | 34724FT40   |  |  |
|           | CH21-2A48    | CS122H21-2A48 |  |  | 34724FR48   |  |  |
|           | CH21-2C48    | CS122H21-2C48 |  |  | 34724FT48   |  |  |
|           | CH21-3A56    | CS122H21-3A56 | 50318AD56  | 50320BG64  | 34724FR56   |  |  |
|           | CH21-3B56    | CS122H21-3B56 |  |  | 34724FS56   |  |  |
|           | CH21-3C56    | CS122H21-3C56 |  |  | 34724FT56   |  |  |
|           | CH21-3A64    | CS122H21-3A64 |  |  | 34724FR64   |  |  |
|           | CH21-3B64    | CS122H21-3B64 | 34724FS64  |  |   |  |  |
|           | CH21-3C64    | CS122H21-3C64 | 34724FT64  |  |   |  |  |
|           | CH21-2A40    | CS132H21-2A40 | 50318AD40  | 50320BG40  | 34724FR40   |  |  |
|           | CH21-2C40    | CS132H21-2C40 |  |  | 34724FT40   |  |  |
|           | CH21-2A48    | CS132H21-2A48 |  |  | 34724FR48   |  |  |
|           | CH21-2C48    | CS132H21-2C48 |  |  | 34724FT48   |  |  |
|           | CH21-3A56    | CS132H21-3A56 | 50318AD56  | 50320BG64  | 34724FR56   |  |  |
|           | CH21-3B56    | CS132H21-3B56 |  |  | 34724FS56   |  |  |
|           | CH21-3C56    | CS132H21-3C56 |  |  | 34724FT56   |  |  |
|           | CH21-3A64    | CS132H21-3A64 |  |  | 34724FR64   |  |  |
|           | CH21-3B64    | CS132H21-3B64 | 34724FS64  |  |   |  |  |
|           | CH21-3C64    | CS132H21-3C64 | 34724FT64  |  |   |  |  |

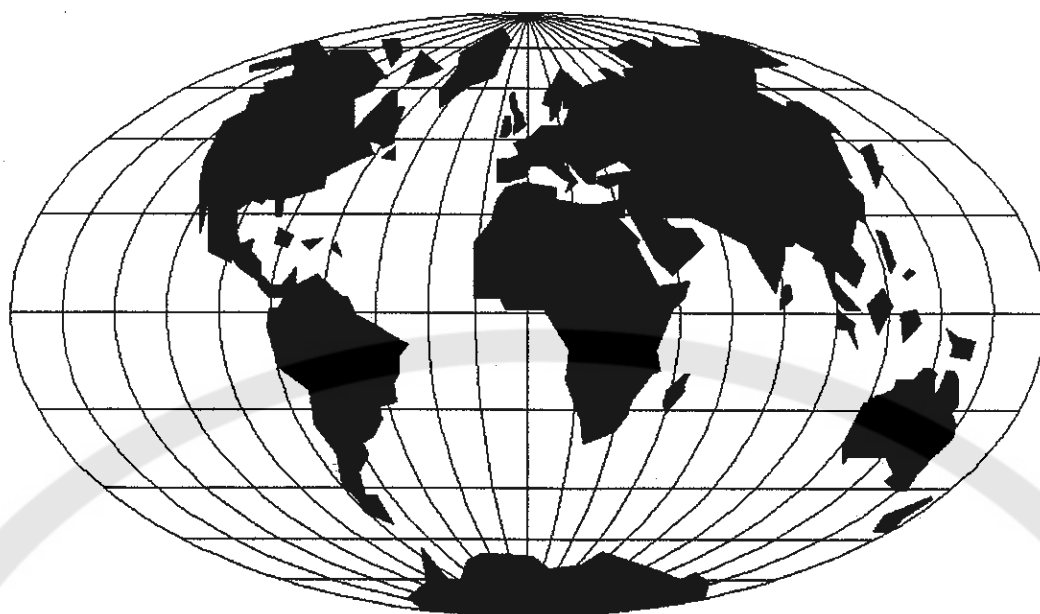




## SEWING PARTS

| Ref.<br>No. | Part No.    | Description   | Amt.<br>Req. |
|-------------|-------------|---|--------------|
| 1.          | 50318AD64   | Needle Head, for sewing comb. (see chart) .....           | 1            |
| 1A.         | 50318AD40   | Needle Head, for sewing comb. (see chart) .....           | 1            |
| 2.          | SS6066440TP | Screw .....   | 1            |
| 3.          | 50318AE56   | Eyelet .....  | 1            |
| 3A.         | 50318AE40   | Eyelet .....  | 1            |
| 4.          | SS8080310TP | Screw .....   | 3/4          |
| 5.          | 50392G      | Needle Thread Eyelet .....                                | 1            |
| 6.          | -----       | Presser Foot Assembly, for sewing comb. (see chart) ..... | 1            |
| 7.          | G57730GB    | Presser Foot Shank .....                                  | 1            |
| 8.          | 91          | Screw .....   | 1            |
| 9.          | 39568J      | Spring .....  | 1            |
| 10.         | 22716A      | Screw .....   | 1            |
| 11.         | 50397A16    | Stitch Tongue .....                                       | 1            |
| 11A.        | 50397C      | Stitch Tongue .....                                       | 1            |
| 12.         | 6-25-1.5mm  | Drill Rod .....   | 1            |
| 13.         | 50330DU64   | Presser Foot Bottom .....                                 | 1            |
| 14.         | 34730AT     | Yielding Section .....                                    | 1            |
| 15.         | G57730GC    | Plate .....   | 1            |
| 16.         | 22716       | Screw .....   | 1            |
| 17.         | 96651       | Roll Pin .....  | 1            |
| 18.         | G57730GD    | Spring .....  | 1            |
| 19.         | 87          | Screw, for throat plate .....                             | 3            |
| 20.         | 22768       | Screw, for throat plate .....                             | 1            |
| 21.         | -----       | Throat Plate, for sewing comb. (see chart) .....          | 1            |
| 22.         | 22730       | Screw .....   | 1            |
| 23.         | 34703F2     | Hemming Guide .....                                       | 1            |
| 24.         | 34703FT     | Hemmer .....  | 1            |
| 25.         | 34726FT     | Differential Feed Dog .....                               | 1            |
| 26.         | 34705FT     | Main Feed Dog .....                                       | 1            |
| 27.         | 99293       | Screw, for feed dogs .....                                | 2            |





## WORLDWIDE SALES AND SERVICE

Union Special Corporation maintains sales and service facilities throughout the world. These offices will aid you in the selection of the right sewing equipment for your particular operation. Union Special Corporation representatives and service technicians are factory trained and are able to serve your needs promptly and efficiently. Whatever your location, there is a qualified representative to serve you.

---

Brussels, Belgium  
Charlotte, N.C.  
El Paso, TX  
Hong Kong, China  
Huntley, IL  
Leicester, England  
Lille, France  
Miami, FL  
Milan, Italy  
Möglingen, Germany  
Montreal, Quebec  
Osaka, Japan  
Santa Fe Springs, CA

Other Representatives throughout  
all parts of the world.



*Union Special*  
INDUSTRIAL SEWING EQUIPMENT