

PARTS LIST

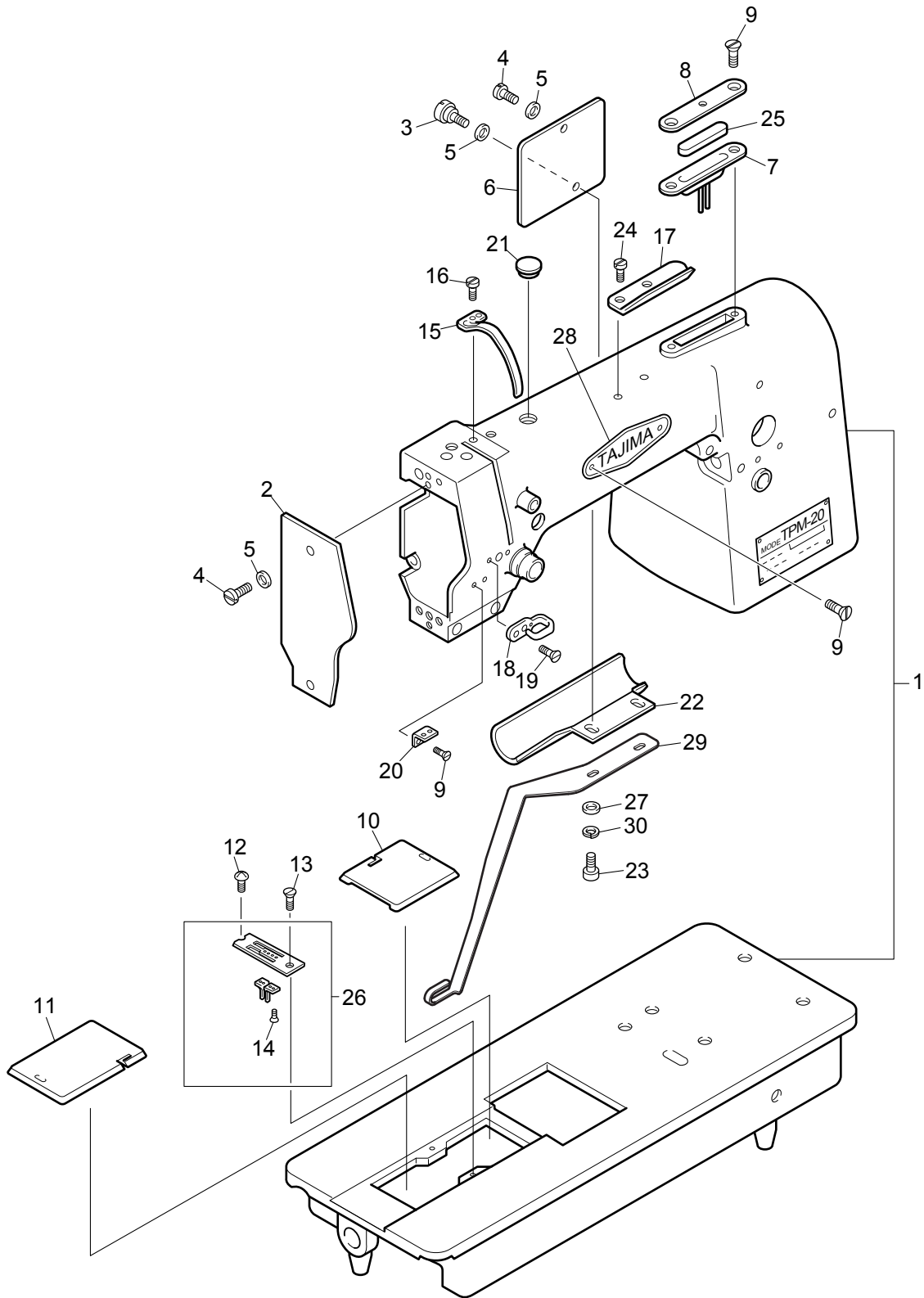
TPM-20

Table of Contents

● TPM-20 MAIN BODY 1.....	TPM-1-1
● TPM-20 MAIN BODY 2.....	TPM-1-2
● TPM-20 MAIN SHAFT MECHANISM 1.....	TPM-2-1
● TPM-20 MAIN SHAFT MECHANISM 2.....	TPM-2-2
● TPM-20 LOWER SHAFT & ROTARY HOOK MECHANISM.....	TPM-3
● TPM-20 FEED MECHANISM.....	TPM-4
● TPM-20 MAIN NEEDLE & ROTARY HOOK MECHANISM.....	TPM-5
● TPM-20 NEEDLE ROCKING & PRESSER MOVING MECHANISM.....	TPM-6
● TPM-20 PRESSER FOOT MECHANISM.....	TPM-7
● TPM-20 ACCESSORIES.....	TPM-8
● TPM-20 TUBULATOR (OPTION).....	TPM-9
● TPM-20 PICOT EDGE KNIFE SET (OPTION).....	TPM-10

[Explanation of Marks *'s at End of Part No.]

- ◆ Please specify your machine's manufacturing number when you order us with parts with the parts having *** at the end of the part No.:



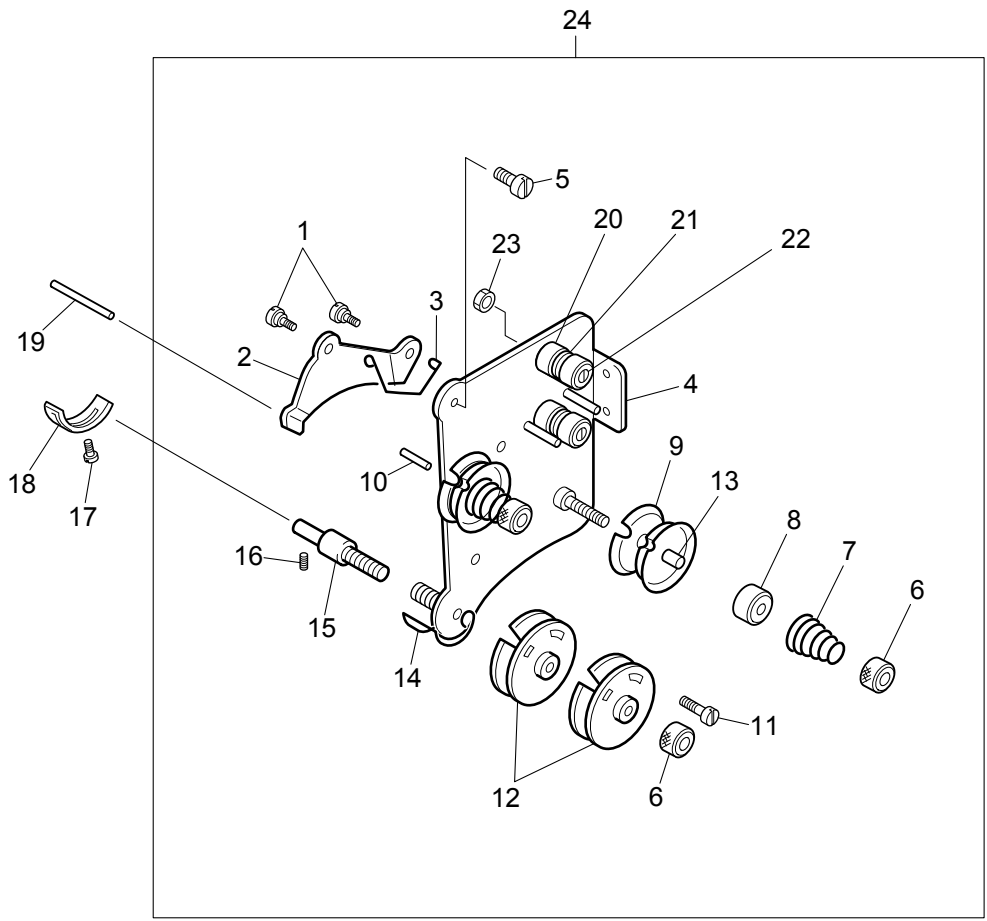
TPM-20 MAIN BODY 1

TPM-1-1

Ref.No.	Description	Part No.	Remark
1	Arm	TPM010100000	
2	Face Plate	TPM010300000	
3	Face Plate Set Screw		9/64*40*8
4	Round Fillister Head Screw	SM66819560CP	9/64*40*6
5	Plain Washer	WSP049010CD0	9/64*9P*1t
6	Side Cover	TPM010400000	
7	Oil Reservoir	TPM010500000	
8	Oil Reservoir Cover	TPM010600000	
9	Round Countersunk Head Screw	SMC5700560CP	9/64*40*6
10	Slide Plate, Right	TPM010700000	
11	Slide Plate, Left	TPM010800000	
12	Round Head Screw	SMH9515540CP	9/64*40*6
13	Round Countersunk Head Screw	EG022800000	11/64*40*8
14	Round Countersunk Head Screw	SMC3300333MZ	3/32*56*3.3
15	Thread Take-up Cover	TPM011100000	
16	Flat Fillister Head Screw	SM17013665CP	9/64*40*6.5
17	Thread Guide A	TPM011200000	
18	Thread Guide B	TPM011300000	
19	Countersunk Head Screw	SMA5000560CP	9/64*40*6
20	Thread Guide C	TPM011400000	
21	Rubber Plug	TPM011500000	
22	Flank Rod Cover	TPM011600000	
23	Hexagon Socket Head Cap Screw	SS6205150TN0	M5*15
24	Round Fillister Head Screw	SM67015660CP	11/64*40*6
25	Felt	TPM013900000	
26	Needle Plate Set	TPM01093S000	#3 Wide Type
26	Needle Plate Set	TPM01094S000	#5 Wide Type
27	Plain Washer	WSP05C008SD0	M5*15
28	Model Name Plate	M10070000000	
29	Needle Base Guard	TPM014100000	
30	Spring Washer	WSS050000KC0	
31			
32			
33			
34			
35			
36			
37			
38			
39			
40			
41			
42			
43			
44			
45			
46			
47			
48			
49			

Note: As for parts with marks # or *, please follow our instructions on Table of Contents in your parts order.

(DF04)



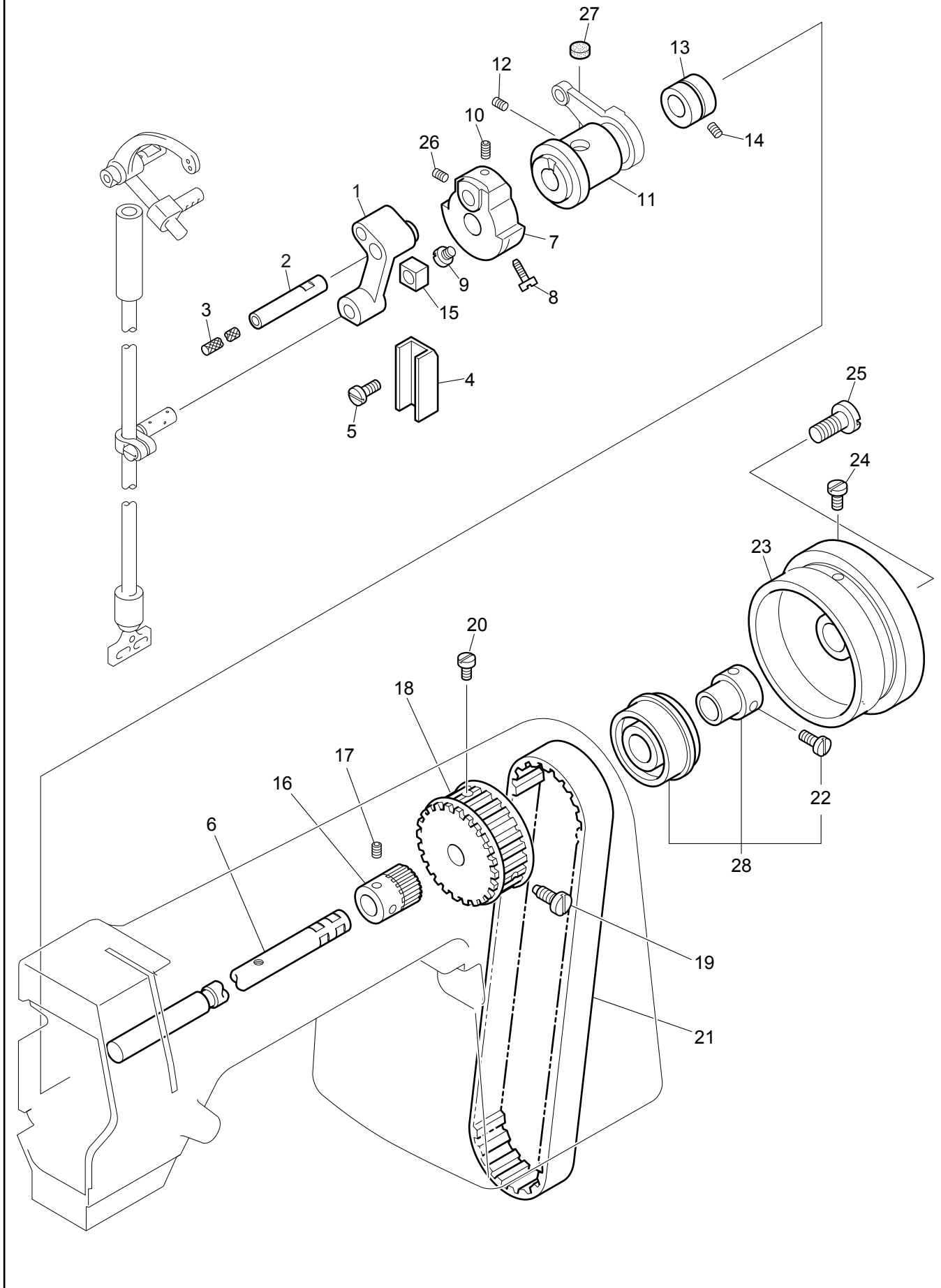
TPM-20 MAIN BODY 2

TPM-1-2

Ref.No.	Description	Part No.	Remark
1	Stepped Flat Screw	TPM011700000	
2	Tension Releaser	TPM011800000	
3	Wire Spring	TPM011900000	
4	Attaching Plate Assembly (Tension Base)	TPM012000000	
5	Round Fillister Head Screw	SM701106CC00	9/64*40*6
6	Thumb Nut	TPM012100000	
7	Conical Spring	TPM012200000	
8	Tension Disk Presser	TPM012300000	
9	Tension Disk	TPM012400000	
10	Pin	TPM012500000	
11	Round Fillister Head Screw	TPM012600000	3/32*56*12
12	Plate Assembly	TPM012700000	
13	Pin	TPM012800000	
14	Thread Take-up Spring	TPM012900000	
15	Tension Shaft	TPM013000000	
16	Set Screw	TPM013100000	15/64*28*8
17	Flat Fillister Head Screw	TPM013200000	9/64*40*4
18	Stopper	TPM013300000	
19	Tension Release Pin	TPM013400000	
20	Thread Guide	TPM013500000	
21	Tension Disk	TPM013600000	
22	Stepped Round Fillister Screw	TPM013700000	
23	Hexagon Nut	TPM013800000	9/64*40
24	Upper Thread Regulator Set	TPM0120S0000	
25			
26			
27			
28			
29			
30			
31			
32			
33			
34			
35			
36			
37			
38			
39			
40			
41			
42			
43			
44			
45			
46			
47			
48			
49			
50			

Note: As for parts with marks # or *, please follow our instructions on Table of Contents in your parts order.

(DF04)



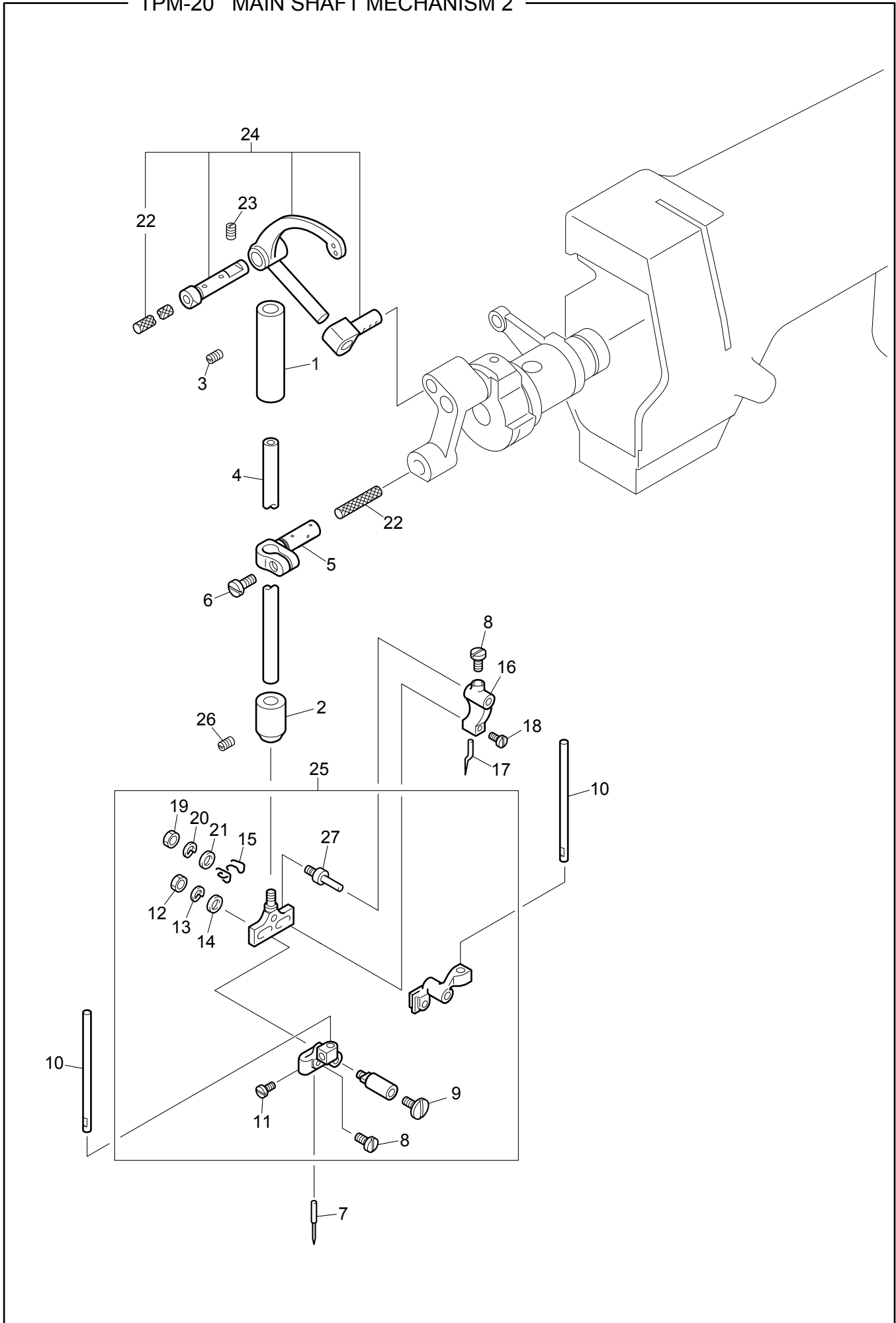
TPM-20 MAIN SHAFT MECHANISM 1

TPM-2-1

Ref.No.	Description	Part No.	Remark
1	Connecting Rod	TPM020800000	
2	Crank Pin	TPM020900000	
3	Oil Wick	TPM023500000	
4	Needle Bar Crank Guide	TPM021000000	
5	Flat Fillister Head Screw	SM17013665CN	11/64*40*6.5
6	Upper Shaft	TPM022100000	
7	Crank	TPM022200000	
8	Flat Fillister Head Screw	SM19540CD0CN	9/32*28*13
9	Flat Fillister Head Screw (Taper Flat)	SM19546CG0CN	9/32*28*16
10	Slotted Set Screw	SMK0000A80CN	1/4*40*4
11	Upper Shaft Bushing, Left	TPM022300000	
12	Slotted Set Screw	SM801508TN00	15/64*28*8
13	Eccentric Bushing	TPM022400000	
14	Hexagon Socket Head Set Screw	SM821606TN00	
15	Square Block	TPM023200000	
16	Upper Shaft Gear	TPM022500000	
17	Slotted Set Screw	SMK0000B50CN	1/4*40*5
18	Upper Shaft Connection Belt Pulley, Upper	TPM022600000	
19	Round Fillister Head Screw (Taper Flat)	SM67035AF0CN	15/64*28*15
20	Flat Fillister Head Screw	SM16530A85CN	15/64*28*12
21	Upper Shaft Connection Belt	TPM022700000	
22	Flat Fillister Head Screw	SM16530A85CN	15/64*28*8.5
23	Balance Wheel	TPM023000000	
24	Flat Fillister Head Screw	SM16528AC0CN	15/64*28*12
25	Upper Shaft Set Screw	TPM023100000	
26	Hexagon Socket Head Set Screw	SMJ0000B50CN	1/4*40*5
27	Felt (Upper Shaft Bushing, Left)	TPM023600000	
28	Bearing Case Set	TPM0228S0000	
29			
30			
31			
32			
33			
34			
35			
36			
37			
38			
39			
40			
41			
42			
43			
44			
45			
46			
47			
48			
49			
50			

Note: As for parts with marks # or *, please follow our instructions on Table of Contents in your parts order.

(DF04)



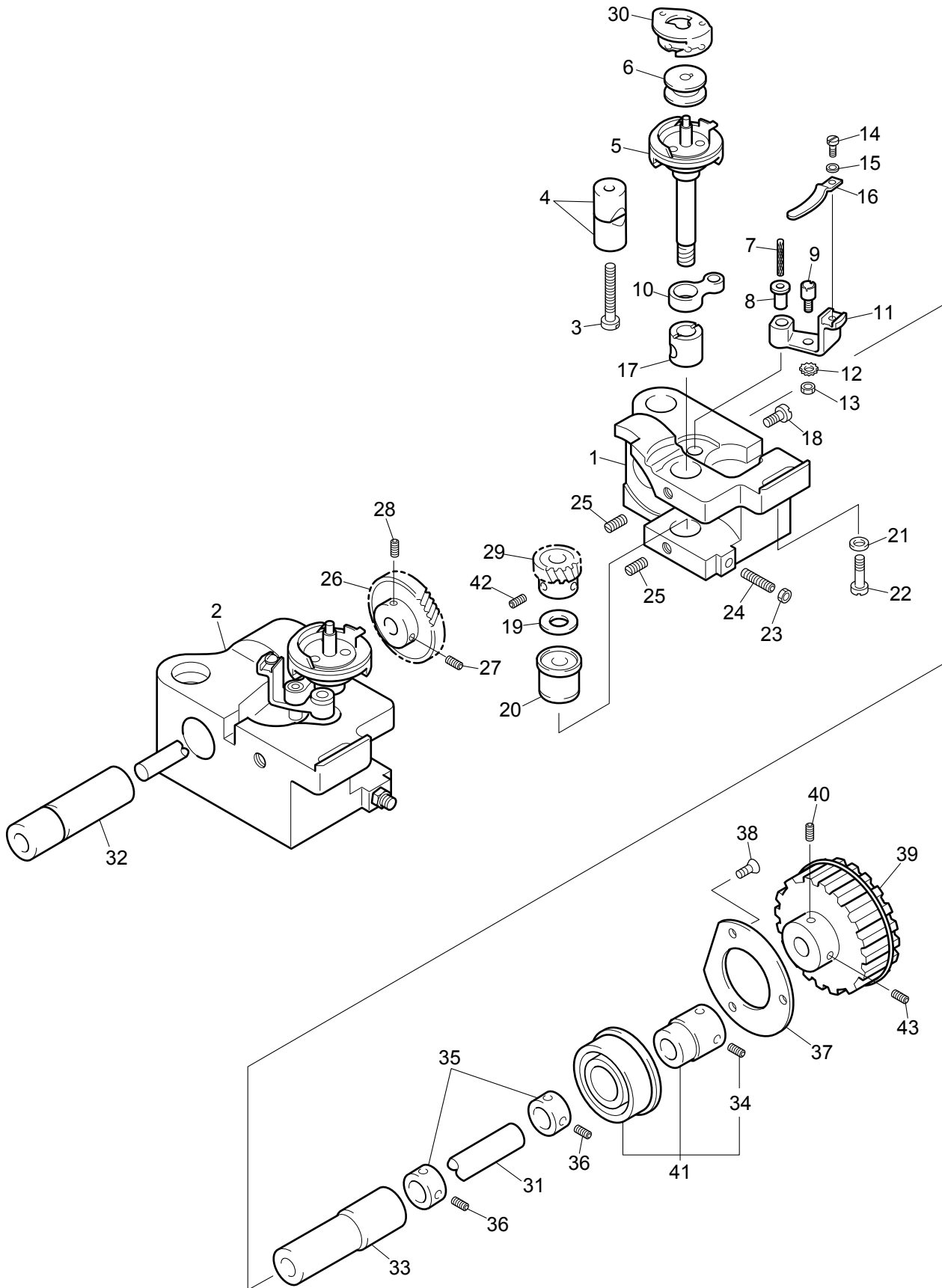
TPM-20 MAIN SHAFT MECHANISM 2

TPM-2-2

Ref.No.	Description	Part No.	Remark
1	Needle Bar Bushing, Upper	TPM020100000	
2	Needle Bar Bushing, Lower	TPM020200000	
3	Hexagon Socket Head Set Screw	SM821508TN00	15/64*28*8
4	Needle Bar	TPM020300000	
5	Needle Bar Connecting Stud	TPM020400000	
6	Flat Fillister Head Screw	SM160235A0CN	9/64*40*8
7	Needle	TPM022000***	DF-M20
8	Flat Fillister Head Screw	SM15522444CN	1/8*44*4
9	Pushing Screw (Needle Clamp)	TPM023700000	9/64*40*6
10	Vertical Guide Shaft	TPM021300000	
11	Flat Fillister Head Screw	SM16012550CN	9/64*40*6
12	Hexagon Nut	SMN056027CP0	9/64*40
13	Spring Washer	WSS049010CD0	9/64
14	Plain Washer	WSP048010CD0	9/64*8*0.5t
15	Needle Bar Thread Guide	TPM021500000	
16	Guide Needle Clamp	TPM021800000	
17	Guide Needle (Piercer)	TPM021900***	PKG-8
18	Round Fillister Head Screw	SM65019430CN	1/8*44*3
19	Hexagon Nut	SMN046020CP0	1/8*44
20	Spring Washer	WSS030000KD0	M3
21	Spacer		1/8*7*2t
22	Oil Wick	TPM023400000	
23	Hexagon Socket Head Set Screw	SMJ0000AF0CN	15/64*28*15
24	Take-up Lever Set	TPM0206S0000	
25	Needle Clamp Set	TPM0214S0000	
26	Hexagon Socket Head Set Screw	SMJ0000A60CN	15/64*28*6
27	Guide Needle Supporting Shaft	TPM021700000	
28			
29			
30			
31			
32			
33			
34			
35			
36			
37			
38			
39			
40			
41			
42			
43			
44			
45			
46			
47			
48			
49			
50			

Note: As for parts with marks # or *, please follow our instructions on Table of Contents in your parts order.

(DF04)



TPM-20 LOWER SHAFT AND ROTARY HOOK MECHANISM

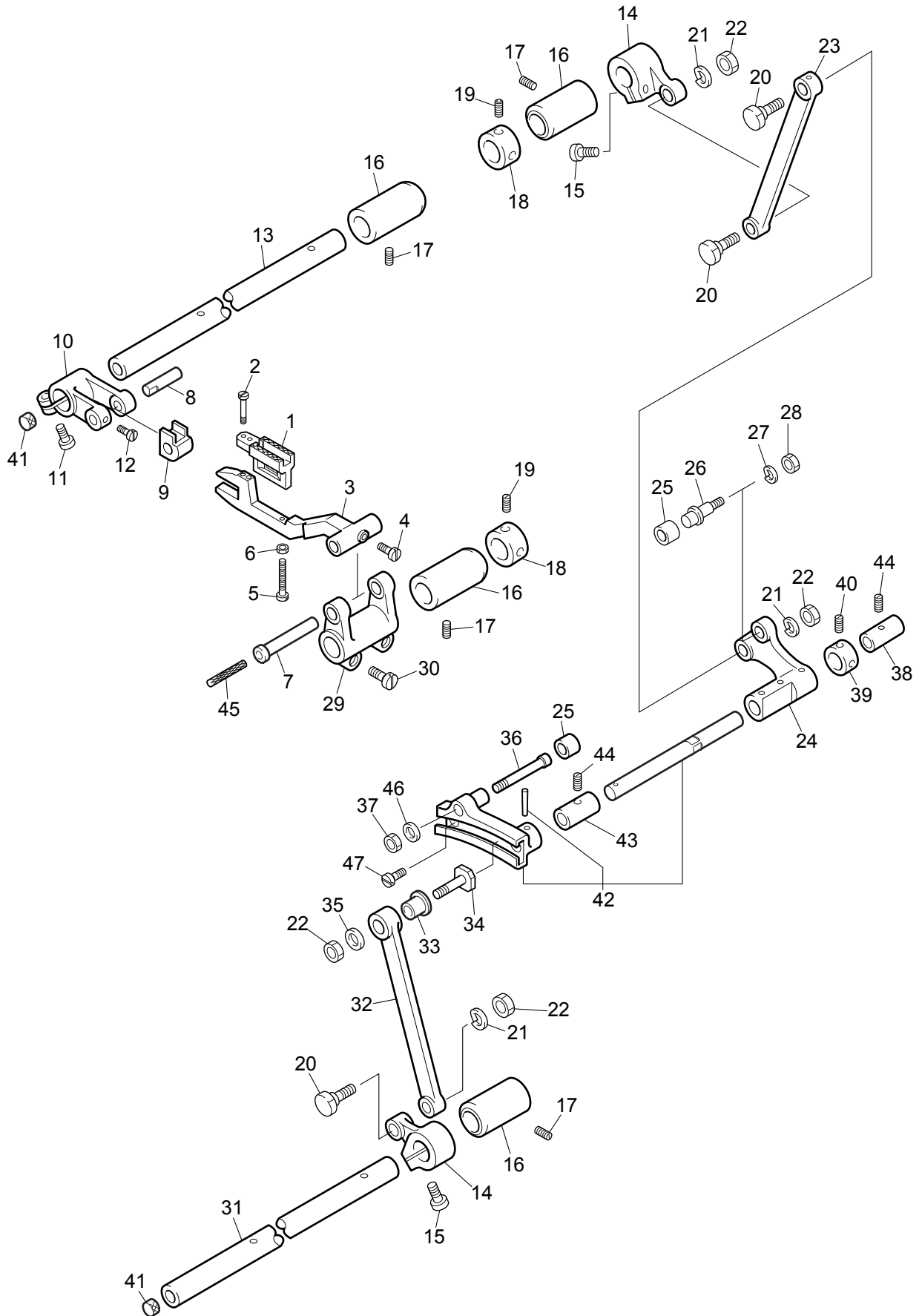
TPM-3

Ref.No.	Description	Part No.	Remark
1	Hook Saddle, Right	TPM030100000	
2	Hook Saddle, Left	TPM030200000	
3	Flat Fillister Head Screw	TPM030300000	15/64*28*22
4	Bushing	TPM030400000	
5	Rotary Hook	TPM030500000	
6	Bobbin	TPM030600000	
7	Oil Wick	TPM030700000	
8	Opener Bracket Shaft	TPM030800000	
9	Special Screw	TPM030910000	
10	Connecting Link	TPM030920000	
11	Opener Supporter	TPM030930000	
12	Spring Washer	TPM030940000	5P
13	Hexagon Nut	TPM030950000	3/16*32
14	Round Fillister Head Screw	TPM031000000	9/64*40*8
15	Lock Washer	TPM031100000	
16	Bobbin Case Opener	TPM031200000	
17	Hook Shaft Bushing, Upper	TPM031300000	
18	Flat Fillister Head Screw	TPM031400000	3/16*28*15
19	Lock Washer	TPM031500000	10P
20	Hook Shaft Bushing, Lower	TPM031600000	
21	Lock Washer	TPM031700000	9P
22	Flat Fillister Head Screw	TPM031800000	1/4*24*23
23	Hexagon Nut	TPM031900000	3/16*28
24	Special Screw	TPM032000000	3/16*28*11.5
25	Slotted Set Screw	TPM032100000	15/64*28*4.5
26	Hook Driving Pinion (Large)	TPM032220000	
27	Slotted Set Screw	TPM032210000	1/4*40*6
28	Slotted Set Screw	TPM032230000	1/4*40*6
29	Hook Driving Pinion (Small)	TPM032240000	
30	Cap	TPM033000000	
31	Lower Shaft	TPM032300000	
32	Lower Shaft Bushing, Left	TPM032400000	
33	Lower Shaft Bushing, Right	TPM032500000	
34	Slotted Set Screw	SMK0000B60CN	1/4*40*6
35	10mm Dia. Collar	TPM033100000	
36	Hexagon Socket Head Set Screw	SS8204040TN0	M4*4
37	Presser Plate	TPM032800000	
38	Round Countersunk Head Screw	SMC4400580CN	9/64*40*8
39	Upper Shaft Connection Belt Pulley, Lower	TPM032900000	
40	Hexagon Socket Head Set Screw	SMJ0000A60CN	15/64*28*6
41	Bearing Set	TPM0326S0000	
42	Slotted Set Screw	SMK0000B40CN	1/4*40*4
43	Hexagon Socket Head Set Screw	SMJ0000A80CN	15/64*28*8
44			
45			
46			
47			
48			
49			
50			

Note: As for parts with marks # or *, please follow our instructions on Table of Contents in your parts order.

(DF04)

TPM-20 FEED MECHANISM



TPM-20 FEED MECHANISM

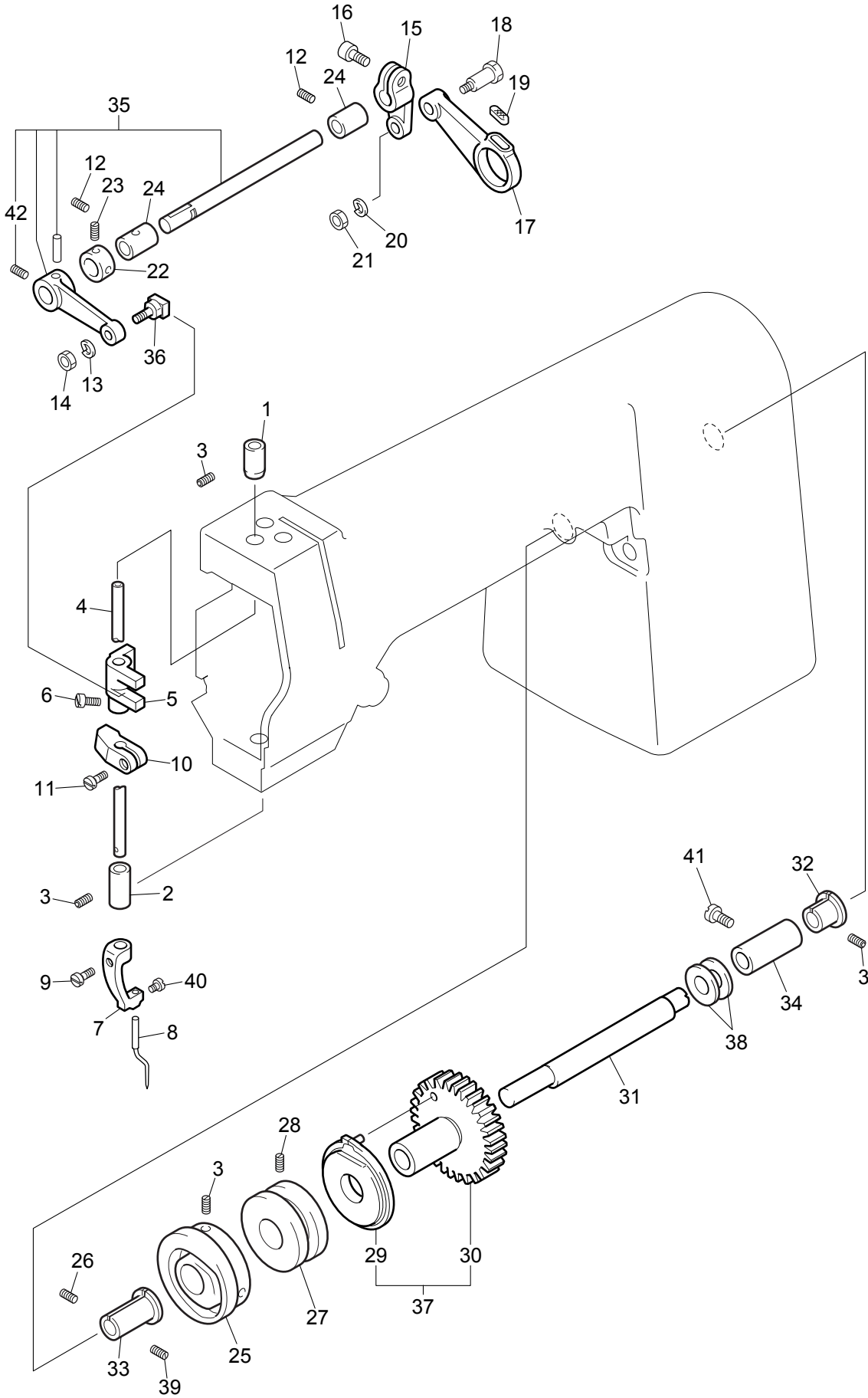
TPM-4

Ref.No.	Description	Part No.	Remark
1	Feed Dog	TPM040102000	
2	Flat Fillister Head Screw	SM15015460CN	1/8*44*6
3	Feed Bar	TPM040200000	
4	Flat Fillister Head Screw	SM15020650MZ	11/64*40*5
5	Flat Fillister Head Screw	SM155184C0CN	1/8*44*12
6	Hexagon Nut	SMN045830CN0	1/8*44
7	Feed Bar Supporting Stud	TPM040300000	
8	Roller Shaft (Feed Lifting Rock Shaft)	TPM040400000	
9	Square Block (Feed Lifting Rock Shaft)	TPM040500000	
10	Feed Lifting Rock Shaft Crank	TPM040600000	
11	Hexagon Socket Head Cap Screw	SS6205150TN0	M5*15
12	Round Fillister Head Screw	SM66014550CN	9/64*28*5
13	Feed Lifting Rock Shaft	TPM040700000	
14	Crank (Feed Lifting/Feed Rock)	TPM040800000	
15	Hexagon Socket Head Cap Screw	SS6205120TN0	M5*12
16	Feed Lifting Rock Shaft Bushing	TPM040900000	
17	Hexagon Socket Head Set Screw	SMJ0000A80CN	15/64*28*8
18	14.73 mm Dia. Collar	TPM042500000	
19	Slotted Set Screw	SMK0000B40CN	1/4*40*4
20	Stepped Screw	TPM041000000	
21	Spring Washer	WSS060000KD0	M6
22	Hexagon Nut	SSN006SD0000	M6
23	Feed Lifting Rock Crank Rod	TPM041100000	
24	Feed Lifting Rock Vibrating Arm	TPM041200000	
25	Roller (Feed Lifting/Feed Rock Cam)	TPM041300000	
26	Roller Shaft (Feed Lifting Rock Shaft)	TPM041400000	
27	Spring Washer	WSS050000KD0	M5
28	Hexagon Nut	SSN005SD0000	M5
29	Feed Rock Shaft Crank	TPM041500000	
30	Round Fillister Head Screw	SM668247C0CN	3/16*28*12
31	Feed Rock Shaft	TPM041600000	
32	Feed Rock Crank Rod	TPM041700000	
33	Feed Rock Crank Rod Bushing	TPM041810000	
34	Feed Rock Crank Rod Pin	TPM041900000	
35	6P Washer	TPM042700000	
36	Roller Shaft	TPM042100000	
37	Hexagon Nut	SMN06A050CN0	11/64*40*6
38	Bushing (Feed/Main Ndl Vibrating Shaft)	TPM042200000	
39	9.53 mm Dia. Collar	TPM042600000	
40	Hexagon Socket Head Set Screw	SS8205050TN0	M5*5
41	Feed Rock Shaft Felt	TPM042800000	
42	Feed Rock Drive Grooved Link Set	TPM0420S0000	
43	Bushing (Feed Rock Shaft)	TPM042900000	
44	Hexagon Socket Head Set Screw	SMK0000A80CN	15/64*28*8
45	Oil Wick	TPM062800000	
46	Plain Washer	WSP05C008SD0	M5
47	Flat Fillister Head Screw	SM15016440CN	1/8*44*4
48			
49			
50			

Note: As for parts with marks # or *, please follow our instructions on Table of Contents in your parts order.

(DF04)

TPM-20 MAIN NEEDLE & CAM MECHANISM



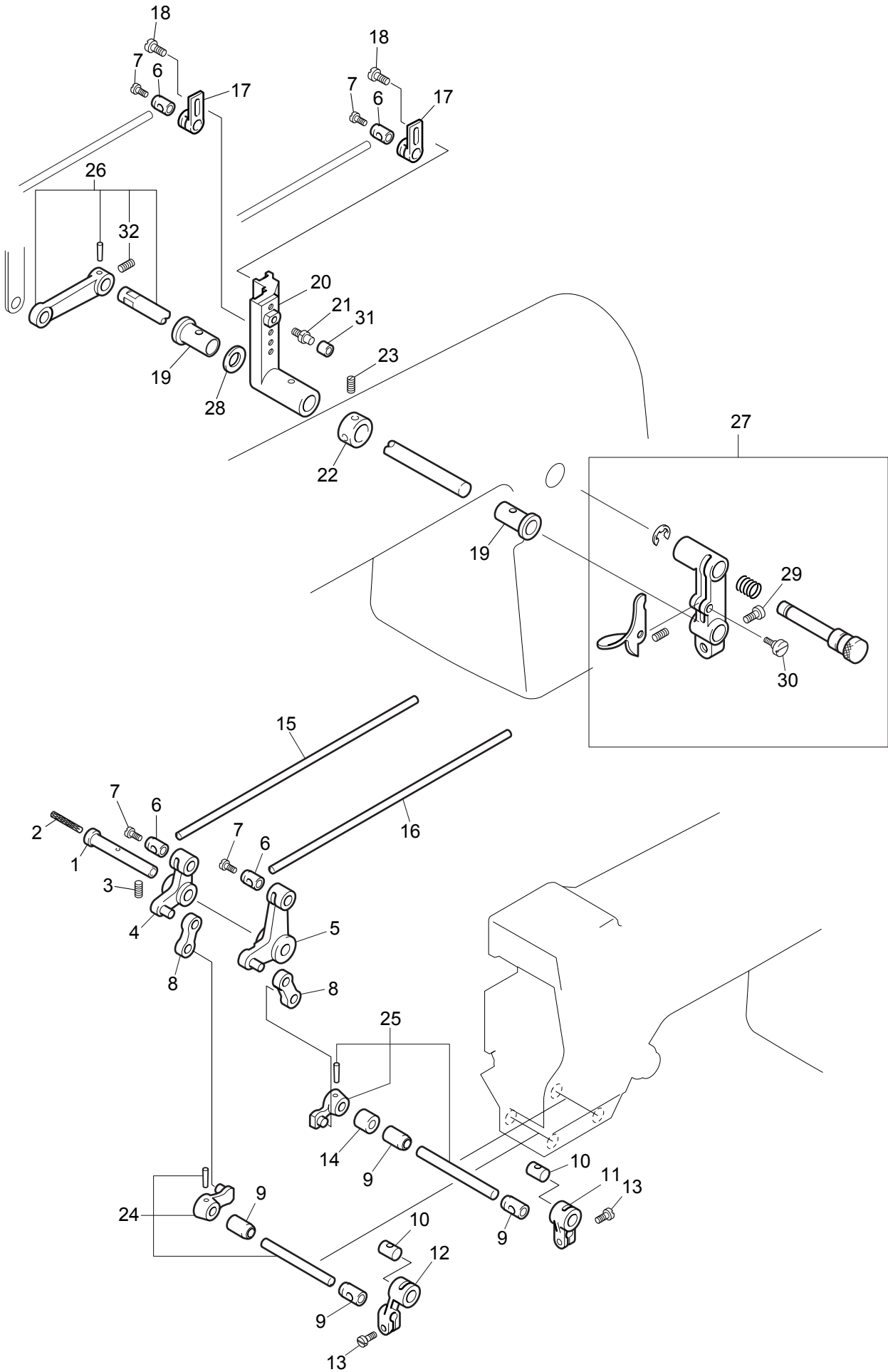
TPM-20 MAIN NEEDLE AND CAM MECHANISM TPM-5

Ref.No.	Description	Part No.	Remark
1	Main Needle Bar Bushing, Upper	TPM050100000	
2	Main Needle Bar Bushing, Lower	TPM050200000	
3	Hexagon Socket Head Set Screw	SMJ0000A80CN	15/64*28*8
4	Main Needle Bar	TPM050300000	
5	Main Needle Bar Connecting Stud	TPM050400000	
6	Round Fillister Head Screw	SM66012550CN	9/64*40*5
7	Main Needle Clamp	TPM050500000	
8	Main Needle (Auxiliary Piercer)	TPM05060****	PKZ-1 #3
9	Round Fillister Head Screw	SM67018580CN	9/64*40*8
10	Main Needle Bar Guide	TPM051100000	
11	Round Fillister Head Screw	SM668205A0CN	9/64*40*10
12	Hexagon Socket Head Set Screw	SMJ0000650CN	11/64*40*5
13	Spring Washer	WSS050000KD0	M5
14	Hexagon Nut	SSN005SD0000	M5
15	Main Needle Vibrating Crank	TPM051200000	
16	Hexagon Socket Head Cap Screw	SS6205150TN0	M5*15
17	Main Needle Vibrating Rod	TPM051300000	
18	Stepped Pin (Feed Rod)	TPM041000000	
19	Felt (Main Needle Vibrating Rod)	TPM052200000	
20	Spring Washer	WSS060000KD0	M6
21	Hexagon Nut	SSN006SD0000	M6
22	9.53 mm Dia. Collar	TPM042600000	
23	Hexagon Socket Head Set Screw	SS8205050TN0	M5*5
24	Bushing (Feed/Main Ndl Vibrating Shaft)	TPM042200000	
25	Feed Rock Cam	TPM051400000	
26	Hexagon Socket Head Set Screw	SMJ0000A60CN	15/64*28*6
27	Needle Vibrating Grooved Cam	TPM051500000	
28	Hexagon Socket Head Set Screw	SMJ0000A40CN	15?64*28*4
29	Presser Moving Cam	TPM051600000	
30	Feed Lifting Rock Cam	TPM051700000	
31	Cam Shaft	TPM051800000	
32	Split Bushing A	TPM051900000	
33	Split Bushing B	TPM052000000	
34	Positioning Sleeve	TPM052100000	
35	Main Needle Activating Arm Set	TPM0507S0000	
36	Square Block Set	TPM0510S0000	
37	Cam Set (Feed Lifting/Presser)	TPM0517S0000	
38	Spacer	TPM052300000	
39	Hexagon Socket Head Set Screw	SMJ0000A60CN	15/64*28*6
40	Flat Fillister Head Screw	SM14014540CN	9/64*40*4
41	Flat Fillister Head Screw	SM17023545CN	9/64*40*4.5
42	Hexagon Socket Head Set Screw	SMJ0000660CN	11/64*40*6
43			
44			
45			
46			
47			
48			
49			
50			

Note: As for parts with marks # or *, please follow our instructions on Table of Contents in your parts order.

(DF04)

TPM-20 NEEDLE ROCKING & PRESSER MOVING MECHANISM



TPM-20 NEEDLE ROCKING AND PRESSER MOVING MECHANISM

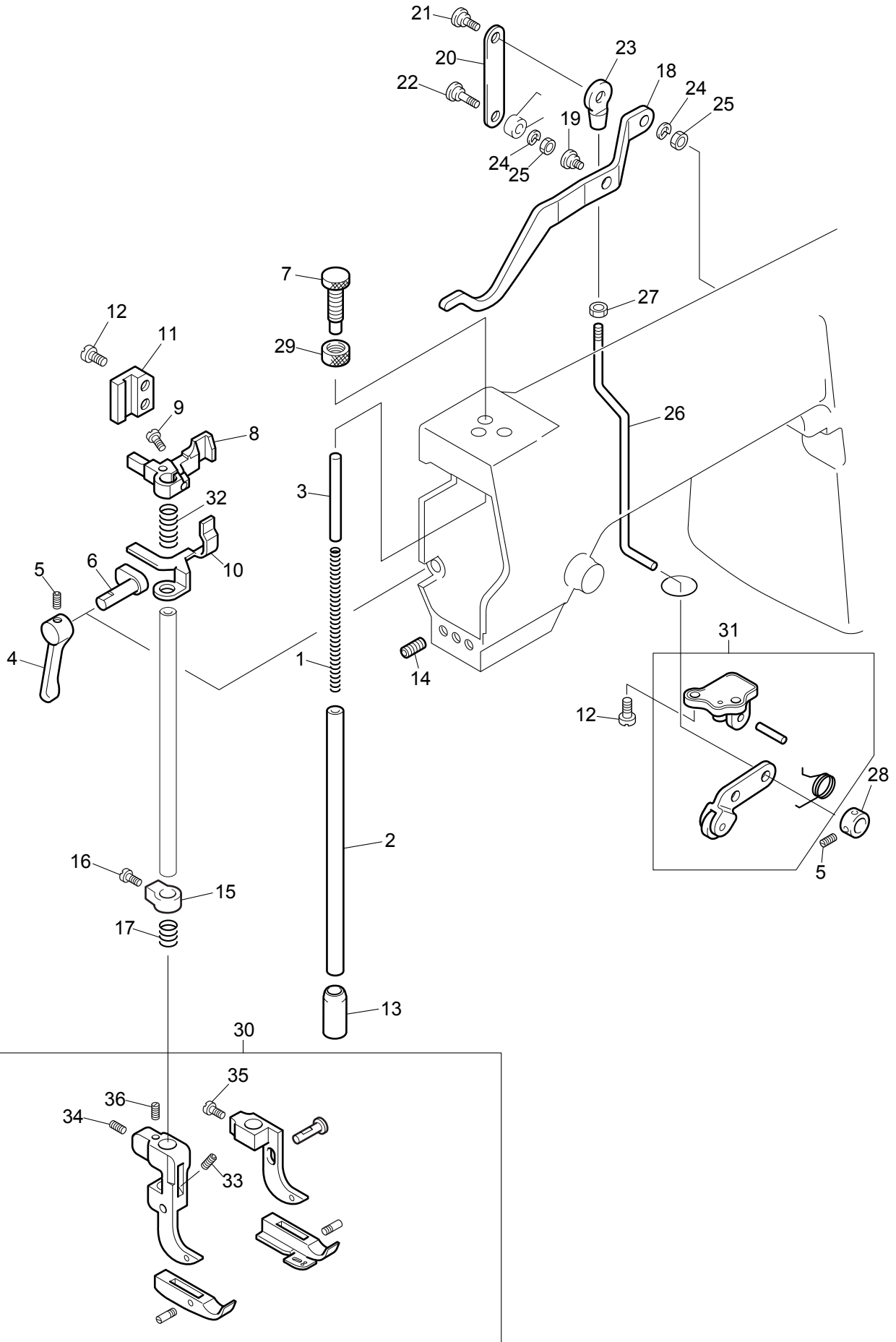
TPM-6

Ref.No.	Description	Part No.	Remark
1	Bell Crank Shaft	TPM060100000	
2	Oil Wick	TPM062800000	
3	Hexagon Socket Head Set Screw	SMJ0000A80CN	15/64*28*8
4	Bell Crank, Small	TPM060200000	
5	Bell Crank, Large	TPM060300000	
6	Flank Rod Bushing	TPM060400000	
7	Round Fillister Head Screw	SM66012550CN	9/64*40*5
8	Vibrating Connecting Link	TPM060500000	
9	Bushing (Needle Vibrating Shaft)	TPM060900000	
10	Vibrating Bushing	TPM061000000	
11	Needle Vibrating Arm, Front Right	TPM061100000	
12	Needle Vibration Arm, Front Left	TPM061200000	
13	Flat Fillister Head Screw	SML6030680CN	11/64*40*8
14	Spacer (Needle Vibrating Shaft, Right)	TPM061300000	
15	Flank Rod 1	TPM061400000	
16	Flank Rod 2	TPM061500000	
17	Slider	TPM061600000	
18	Flat Fillister Head Screw	SM675306C0CN	11/64*40*12
19	Bushing (Needle Vibrating Lever Shaft)	TPM061800000	
20	Needle Vibrating Lever	TPM061900000	
21	Roller Shaft (Needle Vibrating Lever)	TPM062000000	
22	9.53 mm Dia. Collar	TPM042600000	
23	Hexagon Socket Head Set Screw	SS8205050TN0	M5*5
24	Needle Vibrating Arm, Rear Left Set	TPM0607S0000	
25	Needle Vibrating Arm, Rear Right Set	TPM0608S0000	
26	Presser Moving Arm Set	TPM0617S0000	
27	Presser Activating Lever Set	TPM0622S0000	
28	Spacer (Needle Vibrating Lever)	TPM062900000	
29	Hexagon Socket Head Cap Screw	SS6205120TN0	M5*12
30	Stepped Pin (Presser Activating Lever)	TPM062700000	
31	Roller (Needle Vibrating & Presser Moving Lever)	TPM062100000	
32	Hexagon Socket Head Set Screw	SMJ0000660CN	11/64*40*6
33			
34			
35			
36			
37			
38			
39			
40			
41			
42			
43			
44			
45			
46			
47			
48			
49			
50			

Note: As for parts with marks # or *, please follow our instructions on Table of Contents in your parts order.

(DF04)

TPM-20 PRESSER FOOT MECHANISM



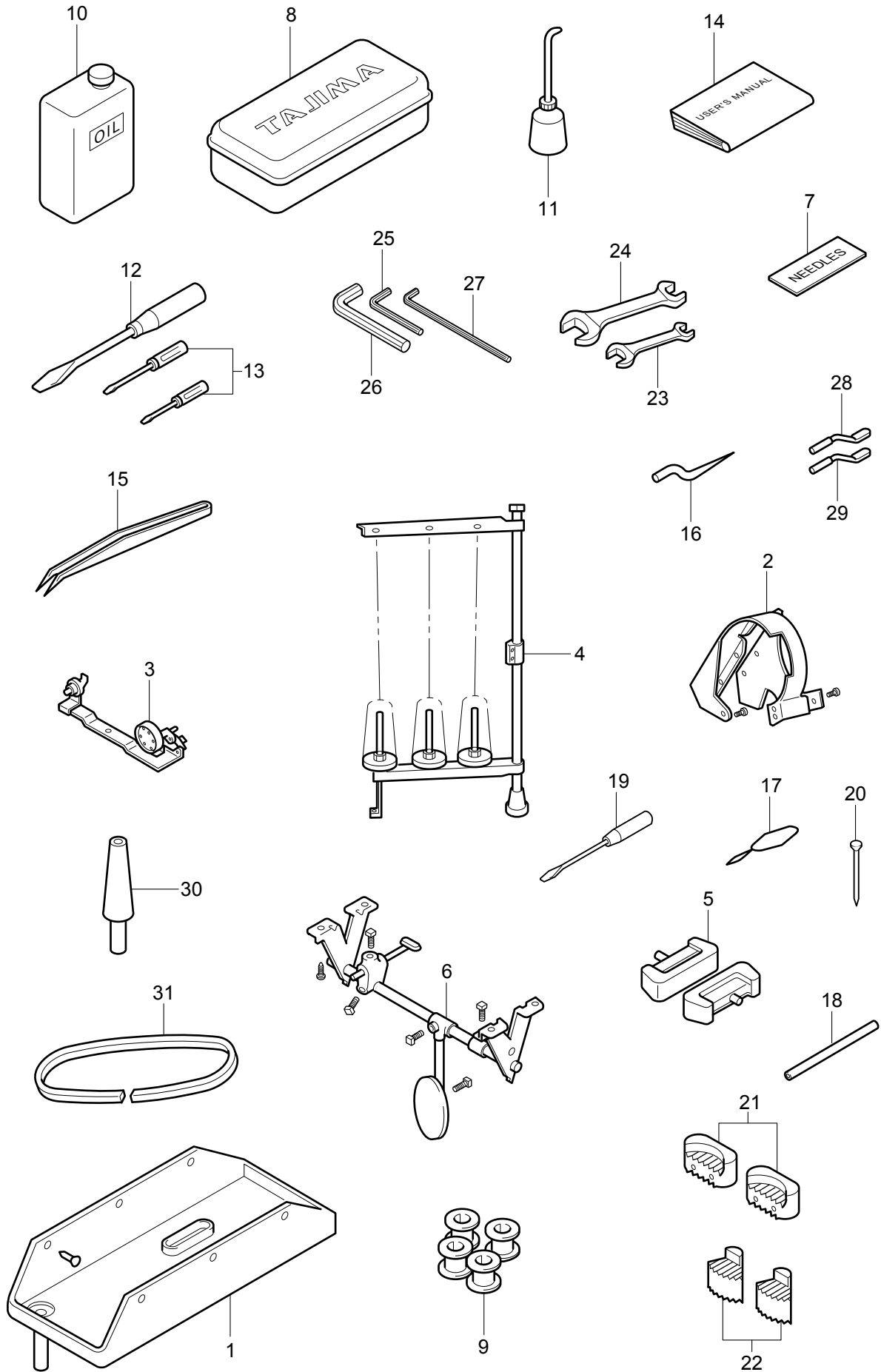
TPM-20 PRESSER FOOT MECHANISM

TPM-7

Ref.No.	Description	Part No.	Remark
1	Presser Bar Spring	TPM070100000	
2	Presser Bar (Hollow)	TPM070200000	
3	Presser Bar Spring Stopper Rod	TPM070300000	
4	Presser Bar Lifter Arm	TPM070400000	
5	Hexagon Socket Head Set Screw	SMJ0000650CN	11/64*40*5
6	Presser Bar Lifter Cam	TPM070500000	
7	Presser Regulating Screw	TPM070600000	
8	Presser Bar Clamp Bracket	TPM070700000	
9	Round Fillister Head Screw	SM675256F0CN	11/64*40*15
10	Tension Releaser	TPM070800000	
11	Presser Bar Clamp Bracket Guide	TPM070900000	
12	Round Fillister Head Screw	SM675306C0CN	11/64*40*12
13	Presser Bar Bushing	TPM071000000	
14	Hexagon Socket Head Set Screw	SMJ0000A60CN	15/64*28*6
15	8.73 mm Dia. Collar	TPM071100000	
16	Round Fillister Head Screw	SM64520540CN	9/64*40*4
17	Tendril Spring	TPM071200000	
18	Knee Lifter Lifting Lever	TPM071800000	
19	Stepped Screw	TPM071900000	
20	Presser Moving Link	TPM072000000	
21	Stepped Screw A	TPM072100000	
22	Stepped Screw B	TPM072200000	
23	Knee Lifter Lever Connecting Joint	TPM072700000	
24	Spring Washer	WSS050000KDO	M5
25	Hexagon Nut	SSN005SD0000	M5
26	Lifter Lever Pulling Rod	TPM072800000	
27	Hexagon Nut	SMN178035CP0	3/16*32
28	5mm Dia. Collar	TPM072900000	
29	Nut	TPM073000000	
30	Presser Foot Set	TPM07162S000	
31	Presser Foot Stitch Tongue Supporter Set	TPM0723S0000	
32	Tendril Spring	TPM073100000	
33	Slotted Set Screw	SMK0000530CN	9/64*40*3
34	Hexagon Socket Head Set Screw	SMJ0000660CN	11/64*40*6
35	Round Fillister Head Screw	SM66022680SD	11/64*40*8
36	Slotted Set Screw	SMK00006C0CN	11/64*40*12
37			
38			
39			
40			
41			
42			
43			
44			
45			
46			
47			
48			
49			
50			

Note: As for parts with marks # or *, please follow our instructions on Table of Contents in your parts order.

(DF04)

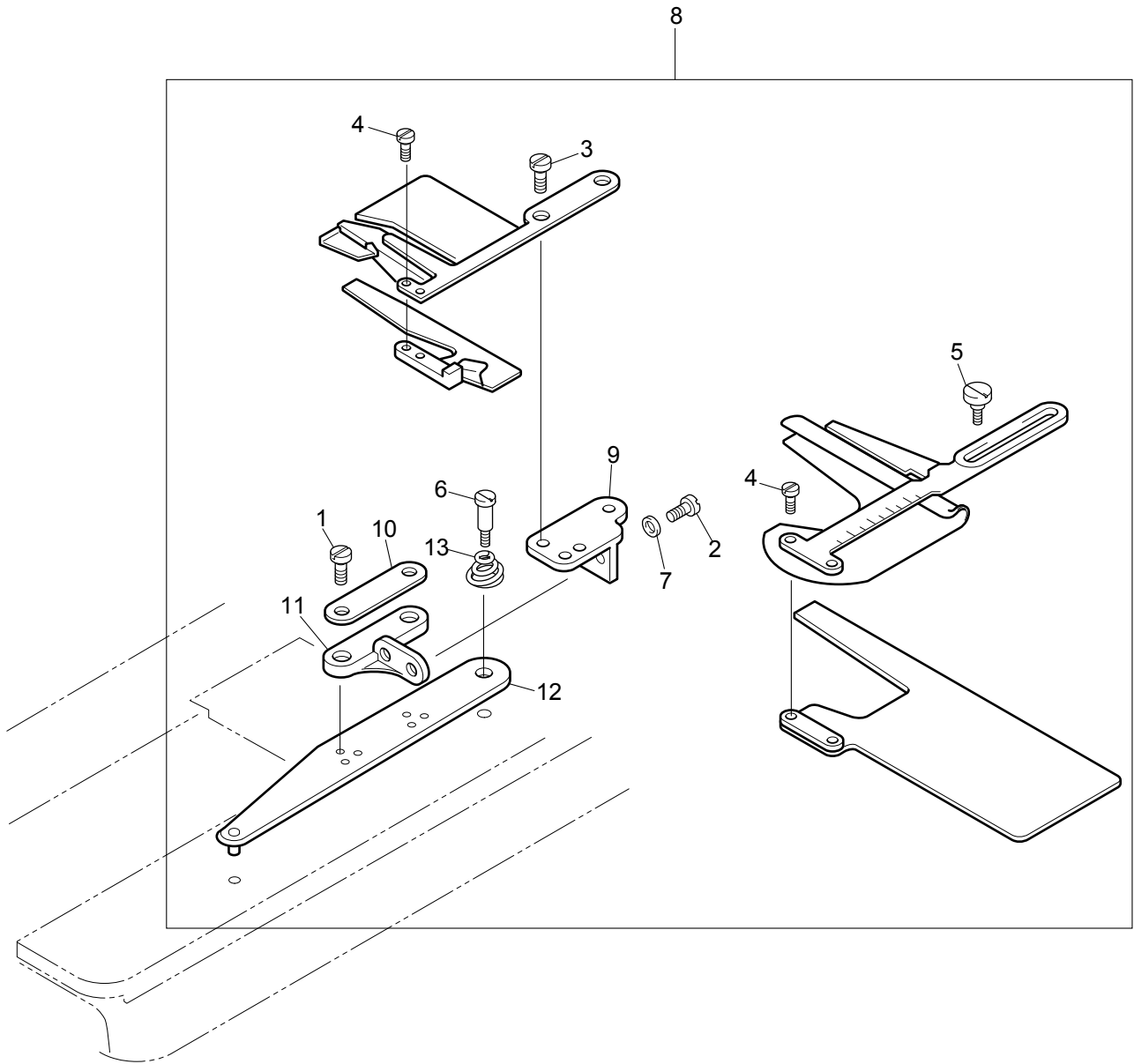


TPM-20 ACCESSORIES

TPM-8

Ref.No.	Description	Part No.	Remark
1	Drip Pan	TPM080100000	
2	Belt Cover Set	MF20E0776000	
3	Bobbin Winder Set	FB152S000000	
4	Bobbin Winder Set	FPL300000000	
5	Hinge Set	MF70E0418000	
6	Knee Lifter Set	FK205G020000	
7	Needle	TPM022001100	
8	Tajima Blue Box		
9	Bobbin	TPM081100000	
10	Machine Oil	TPM081300000	
11	Oiler	DP4001000000	
12	Screw Driver (Large)	DP2105000000	
13	Screw Driver Set (Midium, Small)	DP2101S00000	
14	User's Manual		
15	Tweezers	LEP000000000	
16	Guide Needle (Piercer)	TPM021900000	PGK-8-6
17	Threader	AP1400000000	
18	Duct Oil Extracting Hose	BPTVH6801200	
19	Plastic Screw Driver	DP3104000000	
20	Nail	ZZ0001025000	
21	Vibration-preventive Rubber	MG40B0419000	
22	Vibration-preventive Rubber	MG40B1419000	Large
23	Double-ended Spanner	DP2402000000	Small
24	Double-ended Spanner	DP2409000000	M8*M10
25	L-shaped Hexagon Wrench	DP2504000000	3mm
26	L-shaped Hexagon Wrench	DP2505000000	4mm
27	L-shaped Hexagon Wrench	DP2512000000	2mm*18*120
28	Main Needle (Auxiliary Piercer)	TPM050600200	PKZ-1#2
29	Main Needle (Auxiliary Piercer)	TPM050600300	PKZ-1#3
30	Pushing Bar	DP4301000000	Only supplied with the Table
31	V Belt M43	BPVB43M00000	Only supplied with the Table
32			
33			
34			
35			
36			
37			
38			
39			
40			
41			
42			
43			
44			
45			
46			
47			
48			
49			
50			

Note: As for parts with marks # or *, please follow our instructions on Table of Contents in your parts order.



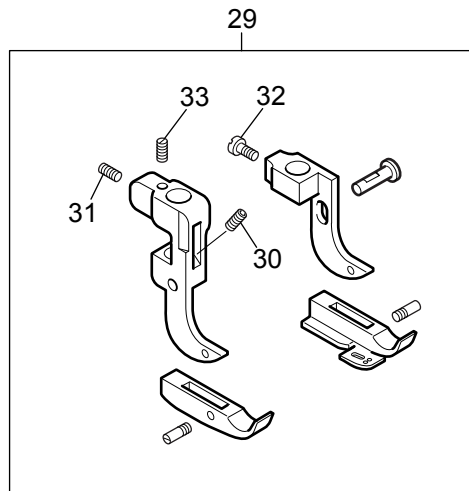
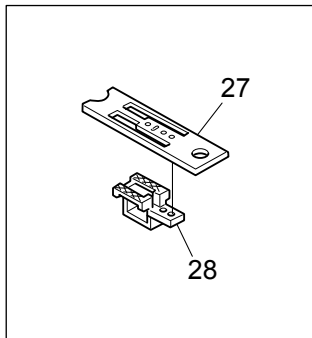
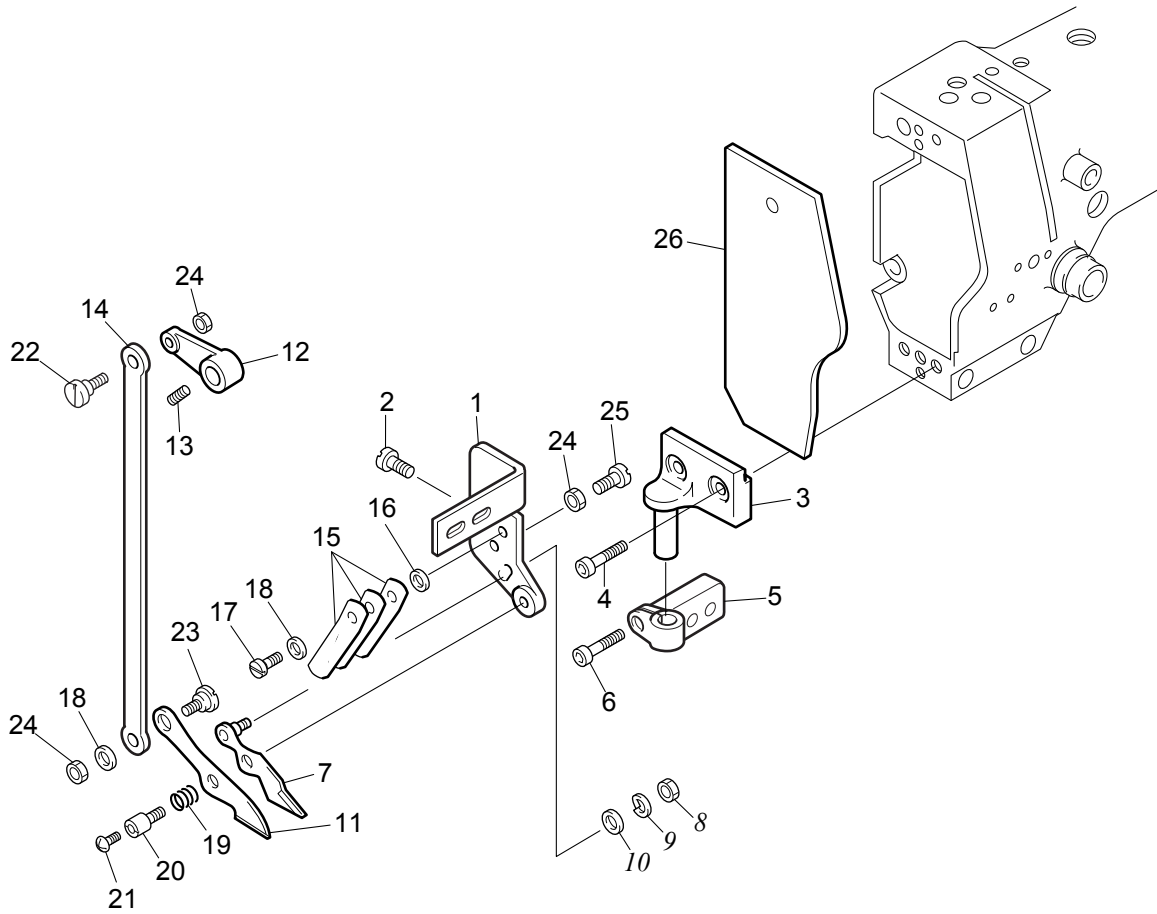
TPM-20 TUBULATOR (OPTION)

TPM-9

Ref.No.	Description	Part No.	Remark
1	No.1 Setting Screw	TPM101500000	
2	Flat Fillister Head Screw	SM180256C0CP	11/64*40*12
3	No.2 Setting Screw	TPM101600000	
4	Round Fillister Head Screw	SM66012560CP	9/64*40*6
5	No.3 Setting Screw	TPM101700000	
6	Tubular Attaching Pin	TPM101300000	
7	Plain Washer	WSP05A008SD0	M5
8	Tubulator Set	TPM1001S0000	
9	No.2 Bracket	TPM100400000	
10	Presser Plate	TPM100200000	
11	No.1 Bracket	TPM100300000	
12	Base	TPM100100000	
13	Presser Spring	TPM101400000	
14			
15			
16			
17			
18			
19			
20			
21			
22			
23			
24			
25			
26			
27			
28			
29			
30			
31			
32			
33			
34			
35			
36			
37			
38			
39			
40			
41			
42			
43			
44			
45			
46			
47			
48			
49			
50			

Note: As for parts with marks # or *, please follow our instructions on Table of Contents in your parts order.

(DF04)



TPM-20 PICOT EDGE KNIFE SET (OPTION) TPM-10

Ref.No.	Description	Part No.	Remark
1	Knife Base	TPM200100000	
2	No.1 Setting Screw	TPM101500000	
3	Knife Base Bracket A	TPM200200000	
4	Hexagon Socket Head Cap Screw	TPM201900000	
5	Knife Base Bracket B	TPM200300000	
6	Hexagon Socket Head Cap Screw	SS6205100TN0	M5*10
7	Fixed Knife Set	TPM2004S0000	
8	Hexagon Nut	SSN004SD0000	M4
9	Spring Washer	WSS040000KD0	M4
10	Plain Washer	WSP04C010SC0	M4
11	Movable Knife	TPM200500000	
12	Knife Driver Lever	TPM200600000	
13	Hexagon Socket Head Set Screw	SS8204040TN0	M4*4
14	Connecting Link	TPM200700000	
15	Plate Spring	TPM200800000	
16	3.8mm Dia. Washer	TPM200900000	
17	Round Fillister Head Screw	SM66014560CP	9/64*40*6
18	Plain Washer	WSP049010CD0	9/64
19	Compressed Coil Spring	TPM201000000	
20	Knife Attaching Pin	TPM201100000	
21	Presser Screw	TPM023700000	
22	Connecting Link Pin A	TPM201200000	
23	Connecting Link Pin B	TPM201300000	
24	Hexagon Nut	SMN056030CP0	9/64*40
25	Flat Fillister Head Screw	SM668205C0CP	9/64*40*12
26	Face Plate (Picot Edge Cutting)	TPM201400000	
27	Needle Plate Set	TPM20151S000	#3 Wide Type
27	Needle Plate Set	TPM20152S000	#5 Wide Type
28	Feed (Picot Edge Cutting)	TPM201620000	
29	Presser Foot Set	TPM2018S0000	
30	Slotted Set Screw	SMK0000530CN	11/64*40*3
31	Hexagon Socket Head Set Screw	SMJ0000660CN	11/64*40*6
32	Round Fillister Head Screw	SM66022680SD	11/64*40*8
33	Slotted Set Screw	SMK00006C0CN	11/64*40*12
34			
35			
36			
37			
38			
39			
40			
41			
42			
43			
44			
45			
46			
47			
48			
49			

Note: As for parts with marks # or *, please follow our instructions on Table of Contents in your parts order.

(DF04)

1st Revision (2000.04)

■ **Manufactured by:**

Tokai Industrial Sewing Machine Co., Ltd.

NO.1800, Ushiyama-cho, Kasugai, Aichi-pre., 486-0901, Japan
Telephone:568-33-1161 Fax:568-33-1191

■ **Distributed by:**

Tajima Industries Ltd.

19-22, Shirakabe, 3-chome, Higashi-ku, Nagoya, 461-0011, Japan
Telephone:52-932-3444 Fax:52-932-2457

■ **Authorized Distributor:**

